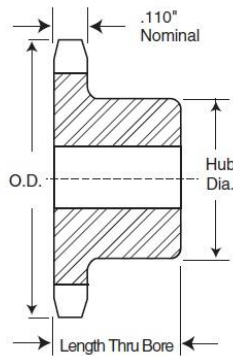




ENGREDAN Elementos de Transmissão Ltda
 Rua Serra de Maracujá, 30 –Parque Reid
 CEP 09920-040

Fone: (11) 2758-6099 / Cel/Whats: (11) 99222-0666 – (11) 93800-3636
 Site: www.engredan.com.br
 E-Mail : vendas@engredan.com.br

ENGRENAGENS ASA 25 SIMPLES PASSO 1/4" – 6,350 MM NORMA ASA AMERICANA



TYPE B



alteration Charges

See current discount sheet for alteration charges.

Single - Type B

Single - Type A

No. Teeth	Catalog Number	Outside Diameter	Type	Bore (Inches)		Hub (Inches)		Weight Lbs. (Approx.)	Type	Catalog Number	Stock Bore	Weight Lbs. (Approx.)
				Stock	Rec. Max.	Diameter	Length Thru Bore					
9	25B9	0.837	B	1/4	1/4	7/16	1/2	0.03	—	—	—	—
10	25B10	0.919	B	1/4	1/4	1/2	1/2	0.03	—	—	—	—
11	25B11	1.002	B	1/4	5/16	5/16	1/2	0.04	—	—	—	—
12	25B12	1.083	B	1/4	3/8	5/8	1/2	0.06	—	—	—	—
13	25B13	1.167	B	1/4	7/16	29/32	1/2	0.07	—	—	—	—
14	25B14	1.246	B	1/4	3/8	13/16	1/2	0.08	—	—	—	—
15	25B15	1.326	B	1/4	3/8	7/8	1/2	0.10	—	—	—	—
16	25B16	1.407	B	1/4	3/8	7/8	1/2	0.12	—	—	—	—
17	25B17	1.487	B	1/4	3/8	1 1/16	1/2	0.14	—	—	—	—
18	25B18	1.568	B	1/4	3/8	1 1/8	1/2	0.16	A	25A18	1/4	0.04
19	25B19	1.648	B	1/4	3/8	1 1/8	1/2	0.19	A	25A19	1/4	0.04
20	25B20	1.729	B	1/4	3/8	1 1/8	1/2	0.25	A	25A20	1/4	0.04
21	25B21	1.809	B	1/4	3/8	1 1/8	3/4	0.28	A	25A21	3/8	0.04
22	25B22	1.889	B	1/4	3/8	1 1/8	3/4	0.31	A	25A22	3/8	0.06
23	25B23	1.969	B	1/4	1	1 1/8	3/4	0.32	A	25A23	3/8	0.06
24	25B24	2.049	B	3/8	1	1 1/2	3/4	0.33	A	25A24	3/8	0.08
25	25B25	2.129	B	3/8	1	1 1/2	3/4	0.34	A	25A25	3/8	0.08
26	25B26	2.209	B	3/8	1	1 1/2	3/4	0.35	A	25A26	3/8	0.09
28	25B28	2.369	B	3/8	1	1 1/2	3/4	0.36	A	25A28	3/8	0.10
30	25B30	2.529	B	3/8	1	1 1/2	3/4	0.38	A	25A30	3/8	0.12
32	25B32	2.688	B	3/8	1	1 1/2	3/4	0.40	A	25A32	3/8	0.14
35	—	2.928	—	—	—	—	—	—	A	25A35	3/8	0.16
36	25B36	3.008	B	3/8	1	1 1/2	3/4	0.50	A	25A36	3/8	0.18
40	25B40	3.327	B	1/2	1 1/8	2	3/4	0.53	A	25A40	1/2	0.20
42	—	3.486	—	—	—	—	—	—	A	25A42	1/2	0.24
45	25B45	3.725	B	1/2	1 1/8	2	3/4	0.56	A	25A45	1/2	0.25
48	25B48	3.964	B	1/2	1 1/8	2	3/4	0.56	A	25A48	1/2	0.32
54	25B54	4.442	B	1/2	1 1/8	2	3/4	1.00	A	25A54	1/2	0.38
60	25B60	4.920	B	1/2	1 1/8	2	3/4	1.10	A	25A60	1/2	0.54
70	25B70	5.717	B	1/2	1 1/8	2	3/4	1.25	—	—	—	—
72	25B72	5.876	B	1/2	1 1/8	2	3/4	1.30	A	25A72	1/2	0.74

Maximum bores shown will accommodate standard keyseat and setscrew over keyseat. Slightly larger bores are possible with no keyseat, shallow keyseat, or



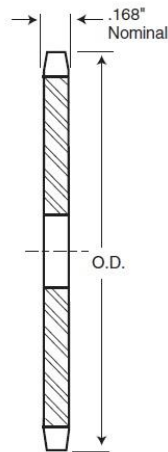
ENGREDAN Elementos de Transmissão Ltda
 Rua Serra de Maracujá, 30 –Parque Reid
 CEP 09920-040

Fone: (11) 2758-6099 / Cel/Whats: (11) 99222-0666 – (11) 93800-3636
 Site: www.engredan.com.br
 E-Mail : vendas@engredan.com.br

ENGRENAGENS ASA 35 SIMPLES PASSO 3/8" – 9,525 MM NORMA ASA AMERICANA

Alteration Charges

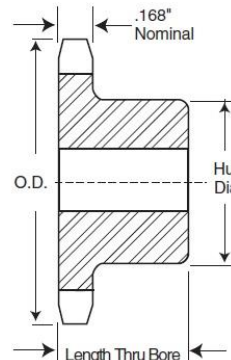
See current discount sheet for alteration charges.



TYPE A



TYPE A



TYPE B



TYPE B

Single - Type B — Steel

Single - Type A

No. Teeth	Catalog Number	Outside Diameter	Type	Bore (Inches)		Hub (Inches)		Weight Lbs. (Approx.)	Type	Catalog Number	Stock Bore	Weight Lbs. (Approx.)
				Stock	Rec. Max.	Diameter	Length Thru					
8	35B8	1.130	B	3/8	3/8	3/8*	3/8	0.07				
9	35B9	1.260	B	3/8	3/8	7/16*	3/8	0.09				
10	35B10	1.380	B	3/8	7/16	7/16*	3/8	0.14				
11	35B11	1.500	B	3/8	7/16	1 1/16*	3/8	0.17				
12	35B12	1.630	B	1/2	9/16	1 1/16*	3/8	0.20				
13	35B13	1.750	B	1/2	1 1/16	1 1/4*	3/8	0.23				
14	35B14	1.870	B	1/2	7/8	1 1/4	3/8	0.25				
15	35B15	1.990	B	1/2	7/8	1 1/2	3/8	0.29	A	35A15	1/2	0.10
16	35B16	2.110	B	1/2	1 1/16	1 1/2	3/8	0.35	A	35A16	1/2	0.12
17	35B17	2.230	B	1/2	1 1/8	1 1/2	3/8	0.42	A	35A17	1/2	0.12
18	35B18	2.350	B	1/2	1 1/8	1 3/4	3/8	0.48	A	35A18	1/2	0.14
19	35B19	2.470	B	1/2	1 1/4	1 3/4	3/8	0.54	A	35A19	1/2	0.16
20	35B20	2.590	B	1/2	1 1/4	1 3/4	3/8	0.59	A	35A20	1/2	0.20
21	35B21	2.710	B	1/2	1 1/2	2	3/8	0.80	A	35A21	1/2	0.20
22	35B22	2.830	B	1/2	1 1/2	2	3/8	0.80	A	35A22	1/2	0.22
23	35B23	2.950	B	1/2	1 1/2	2	3/8	0.82	A	35A23	1/2	0.24
24	35B24	3.070	B	1/2	1 3/8	2	3/8	0.88	A	35A24	1/2	0.26
25	35B25	3.190	B	1/2	1 3/8	2	3/8	0.88	A	35A25	1/2	0.28
26	35B26	3.310	B	1/2	1 3/8	2	3/8	0.90	A	35A26	1/2	0.28
27	35B27	3.430	B	1/2	1 3/8	2	3/8	0.94	A	35A27	1/2	0.34
28	35B28	3.550	B	1/2	1 3/8	2	3/8	0.94	A	35A28	1/2	0.34
30	35B30	3.790	B	1/2	1 3/8	2	3/8	1.02	A	35A30	1/2	0.46
32	35B32	4.030	B	1/2	1 3/8	2	3/8	1.24	A	35A32	3/8	0.46
35	35B35	4.390	B	3/4	1 1/2	2 1/4	3/8	1.50	A	35A35	3/8	0.60
36	35B36	4.510	B	3/4	1 1/2	2 1/4	3/8	1.56	A	35A36	3/8	0.62
40	35B40	4.990	B	3/4	1 1/2	2 1/4	1	1.62	A	35A40	1 1/16	0.70
42	35B42	5.230	B	3/4	1 1/2	2 1/4	1	1.68	A	35A42	1 1/16	0.78
45	35B45	5.590	B	3/4	1 1/2	2 1/4	1	1.78	A	35A45	1 1/16	0.88
48	35B48	5.950	B	3/4	1 1/2	2 1/4	1	1.88	A	35A48	1 1/16	1.21
54	35B54	6.660	B	3/4	1 1/2	2 1/4	1	2.20	A	35A54	1 1/16	1.32
60	35B60	7.380	B	3/4	1 1/2	2 1/4	1	2.48	A	35A60	1 1/16	1.66
70	35B70	8.580	B	3/4	1 1/2	2 1/4	1	3.12	A	35A70	1 1/16	2.30
72	35B72	8.810	B	3/4	1 1/2	2 1/4	1	3.42	A	35A72	1 1/16	2.56
80	35B80	9.770	B	3/4	1 1/2	2 1/4	1	3.82	A	35A80	1 1/16	3.16
84	35B84	10.250	B	3/4	1 1/2	2 1/4	1	4.24	A	35A84	1 1/16	3.26
96	35B96	11.680	B	3/4	1 1/2	2 1/4	1	5.16	A	35A96	1 1/16	4.64
112	35B112	13.590	B	3/4	1 1/2	2 1/4	1	6.70	A	35A112	1 1/16	5.05

* Has recessed groove in hub for chain clearance.

Maximum bores shown will accommodate standard keyseat and setscrew over keyseat. Slightly larger bores are possible with no keyseat, shallow keyseat, or setscrew at angle to keyseat.



ENGREDAN Elementos de Transmissão Ltda
 Rua Serra de Maracujá, 30 –Parque Reid
 CEP 09920-040

Fone: (11) 2758-6099 / Cel/Whats: (11) 99222-0666 – (11) 93800-3636
 Site: www.engredan.com.br
 E-Mail : vendas@engredan.com.br

ENGRENAGENS ASA 40 SIMPLES PASSO 1/2" – 12.700 MM NORMA ASA AMERICANA

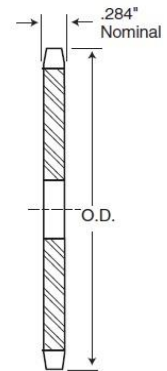
Single - Type B

Single - Type A

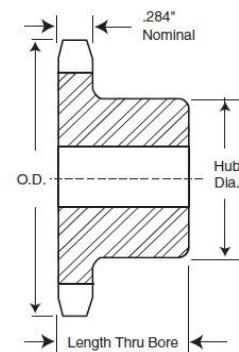
No. Teeth	Catalog Number	Outside Diameter	Type	Bore (Inches)		Hub (Inches)		Weight Lbs (Approx.)	Type	Catalog Number	Stock Bore	Weight Lbs. (Approx.)
				Stock	Rec. Max.	Diameter	Length Thru Bore					
8	40B8	1.510	B	1/2	1/2	3/8*	7/8	0.18				
9	40B9	1.670	B	1/2	5/8	1 1/8*	7/8	0.20				
10	40B10	1.840	B	1/2	3/4	1 1/4*	7/8	0.27				
11	40B11	2.000	B	1/2	7/8	1 3/8*	7/8	0.35				
12	40B12	2.170	B	1/2	1	1 5/8*	7/8	0.45	A	40A12	1/2	0.18
13	40B13	2.330	B	1/2	1 1/8	1 7/8	7/8	0.50	A	40A13	1/2	0.22
14	40B14	2.490	B	1/2	1 1/4	1 7/8	7/8	0.59	A	40A14	1/2	0.26
15	40B15	2.650	B	1/2	1 1/2	1 7/8	7/8	0.70	A	40A15	1/2	0.30
16	40B16	2.810	B	5/8	1 1/8	2	7/8	0.79	A	40A16	5/8	0.34
17	40B17	2.980	B	5/8	1 1/4	2 1/8	1	1.04	A	40A17	5/8	0.36
18	40B18	3.140	B	5/8	1 1/2	2 1/8	1	1.22	A	40A18	5/8	0.44
19	40B19	3.300	B	5/8	1 3/4	2 1/8	1	1.43	A	40A19	5/8	0.46
20	40B20	3.460	B	5/8	1 7/8	2 3/8	1	1.56	A	40A20	5/8	0.56
21	40B21	3.620	B	5/8	2	2 3/8	1	1.73	A	40A21	5/8	0.58
22	40B22	3.780	B	5/8	2 1/8	2 3/8	1	1.96	A	40A22	5/8	0.66
23	40B23	3.940	B	5/8	2 1/4	3	1	2.13	A	40A23	5/8	0.72
24	40B24	4.100	B	5/8	2 1/2	3 1/4	1	2.41	A	40A24	5/8	0.82
25	40B25	4.260	B	5/8	2 3/4	3 1/4	1	2.54	A	40A25	5/8	0.88
26	40B26	4.420	B	5/8	2 3/4	3 1/4	1	2.58	A	40A26	5/8	0.94
27	40B27	4.580	B	5/8	2 3/4	3 1/4	1	2.66	A	40A27	5/8	0.98
28	40B28	4.740	B	5/8	2 3/4	3 1/4	1	2.73	A	40A28	5/8	1.10
29	40B29	4.900	B	5/8	2 3/4	3 1/4	1	2.80	A	40A29	19/32	1.22
30	40B30	5.060	B	5/8	2 3/4	3 1/4	1	2.98	A	40A30	19/32	1.26
31	40B31	5.220	B	5/8	2 3/4	3 1/4	1	3.10	A	40A31	19/32	1.40
32	40B32	5.380	B	5/8	2 3/4	3 1/4	1	3.16	A	40A32	19/32	1.48
33	40B33	5.540	B	5/8	2 3/4	3 1/4	1	3.22	A	40A33	19/32	1.56
34	40B34	5.700	B	5/8	2 3/4	3 1/4	1	3.30	A	40A34	19/32	1.64
35	40B35	5.860	B	5/8	2 3/4	3 1/4	1	3.46	A	40A35	19/32	1.70
36	40B36	6.020	B	5/8	2 3/4	3 1/4	1	3.58	A	40A36	19/32	1.84
37	40B37	6.180	B	5/8	2 3/4	3 1/4	1	3.62	A	40A37	19/32	1.92
38	40B38	6.330	B	5/8	2 3/4	3 1/4	1	3.70	A	40A38	19/32	2.00
39	40B39	6.490	B	5/8	2 3/4	3 1/4	1	3.76	A	40A39	19/32	2.02
40	40B40	6.650	B	3/4	2 3/4	3 1/2	1 1/8	4.69	A	40A40	23/32	2.22
41	40B41	6.810	B	3/4	2 3/4	3 1/2	1 1/8	4.76	A	40A41	23/32	2.40
42	40B42	6.970	B	3/4	2 3/4	3 1/2	1 1/8	4.82	A	40A42	23/32	2.52
43	40B43	7.130	B	3/4	2 3/4	3 1/2	1 1/8	5.12	A	40A43	23/32	2.64
44	40B44	7.290	B	3/4	2 3/4	3 1/2	1 1/8	5.15	A	40A44	23/32	2.81
45	40B45	7.450	B	3/4	2 3/4	3 1/2	1 1/8	5.30	A	40A45	23/32	2.90
46	40B46	7.610	B	3/4	2 3/4	3 1/2	1 1/8	5.57	A	40A46	23/32	3.03
47	40B47	7.770	B	3/4	2 3/4	3 1/2	1 1/8	5.44	A	40A47	23/32	3.17
48	40B48	7.930	B	3/4	2 3/4	3 1/2	1 1/8	5.84	A	40A48	23/32	3.31
49	40B49	8.090	B	3/4	2 3/4	3 1/2	1 1/8	5.90	A	40A49	23/32	3.45
50	40B50	8.250	B	3/4	2 3/4	3 1/2	1 1/8	5.96	A	40A50	23/32	3.60
51	40B51	8.410	B	3/4	2 3/4	3 1/2	1 1/8	6.08	A	40A51	23/32	3.75
52	40B52	8.570	B	3/4	2 3/4	3 1/2	1 1/8	6.28	A	40A52	23/32	3.90
53	40B53	8.730	B	3/4	2 3/4	3 1/2	1 1/8	6.33	A	40A53	23/32	4.05
54	40B54	8.890	B	3/4	2 3/4	3 1/2	1 1/8	6.42	A	40A54	23/32	4.44
55	40B55	9.040	B	3/4	2 3/4	3 1/2	1 1/8	6.46	A	40A55	23/32	4.54
56	40B56	9.200	B	3/4	2 3/4	3 1/2	1 1/8	6.89	A	40A56	23/32	4.84
57	40B57	9.360	B	3/4	2 3/4	3 1/2	1 1/8	7.02	A	40A57	23/32	5.00
58	40B58	9.520	B	3/4	2 3/4	3 1/2	1 1/8	7.36	A	40A58	23/32	5.12
59	40B59	9.680	B	3/4	2 3/4	3 1/2	1 1/8	7.45	A	40A59	23/32	5.30
60	40B60	9.840	B	3/4	2 3/4	3 1/2	1 1/8	7.86	A	40A60	23/32	5.48
70	40B70	11.430	B	3/4	2 3/4	4	1 1/2	11.00	A	40A70	23/32	7.24
72	40B72	11.750	B	3/4	2 3/4	4	1 1/2	11.50	A	40A72	23/32	7.56
80	40B80	13.030	B	3/4	2 3/4	4	1 1/2	13.40	A	40A80	23/32	10.20
84	40B84	13.660	B	3/4	2 3/4	4	1 1/2	14.04	A	40A84	23/32	10.07
96	40B96	15.570	B	1	2 3/4	4	1 1/2	17.56	A	40A96	1 1/8	12.15
112	40B112	18.120	B	1	2 3/4	4	1 1/2	22.56	A	40A112	1 1/8	20.00

* Has recessed groove in hub for chain clearance.

Maximum bores shown will accommodate standard keyseat and setscrew over keyseat. Slightly larger bores are possible with no keyseat, shallow keyseat, or setscrew at angle to keyseat.



TYPE A



TYPE B



ENGREDAN Elementos de Transmissão Ltda
 Rua Serra de Maracujá, 30 –Parque Reid
 CEP 09920-040

Fone: (11) 2758-6099 / Cel/Whats: (11) 99222-0666 – (11) 93800-3636
 Site: www.engredan.com.br
 E-Mail : vendas@engredan.com.br

ENGRENAGENS ASA 40-2 DUPLA PASSO 1/2" – 12,700 MM NORMA ASA AMERICANA

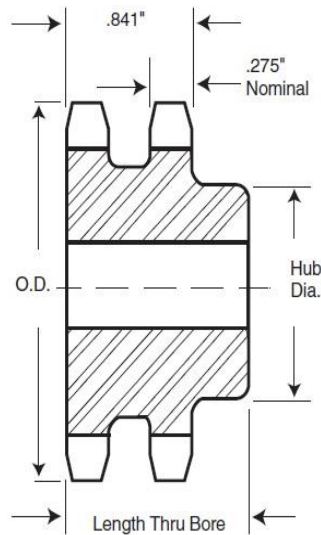
Double - Type B

No. Teeth	Catalog Number	Outside Diameter	Type	Bore (Inches)		Hub (Inches)		Weight Lbs. (Approx.)
				Stock	Rec. Max.	Dia.	Length Thru	
11	D40B11H	2.000	B	1/2	3/4	1 1/16*	1 1/2	0.62
12	D40B12H	2.170	B	1/2	7/8	1 1/8*	1 1/2	0.76
13	D40B13H	2.330	B	1/2	1	1 1/2	1 1/2	0.86
14	D40B14H	2.490	B	1/2	1 1/8	1 1/2	1 1/2	1.08
15	D40B15H	2.650	B	1/2	1 1/4	1 1/2	1 1/2	1.24
16	D40B16H	2.810	B	5/8	1 1/2	2	1 1/2	1.42
17	D40B17H	2.980	B	5/8	1 3/8	2 1/8	1 1/2	1.64
18	D40B18H	3.140	B	5/8	1 1/2	2 1/8	1 1/2	1.92
19	D40B19H	3.300	B	5/8	1 3/4	2 1/8	1 1/2	2.22
20	D40B20H	3.460	B	5/8	1 3/4	2 1/8	1 1/2	2.64
21	D40B21H	3.620	B	5/8	1 3/4	2 1/8	1 1/2	2.94
22	D40B22H	3.780	B	5/8	1 3/4	2 1/8	1 1/2	3.18
23	D40B23H	3.940	B	5/8	2	3	1 1/2	3.52
24	D40B24H	4.100	B	5/8	2 1/8	3 1/8	1 1/2	4.04
25	D40B25H	4.260	B	5/8	2 1/8	3 1/8	1 1/2	4.26
26	D40B26	4.420	B	5/8	2 1/8	3 1/8	1 1/2	4.48
30	D40B30	5.060	B	7/8	2 1/4	3 3/8	1 1/2	5.34
35	D40B35	5.860	B	7/8	2 1/4	3 3/8	1 1/2	6.80
36	D40B36	6.020	B	7/8	2 1/4	3 3/8	1 1/2	7.20
40	D40B40	6.650	B	7/8	2 1/4	3 3/8	1 1/2	9.40
42	D40B42	6.970	B	7/8	2 1/2	3 3/8	1 1/2	10.20
45	D40B45	7.450	B	7/8	2 1/2	3 3/8	1 1/2	11.36
48	D40B48	7.930	B	7/8	2 1/2	3 3/8	1 1/2	12.66
52	D40B52	8.570	B	7/8	2 1/2	3 3/8	1 1/2	14.46
54	D40B54	8.890	B	7/8	2 1/2	3 3/8	1 1/2	15.48
60	D40B60	9.840	B	7/8	2 1/2	3 3/8	1 1/2	18.60
68	D40B68	11.120	B	1 1/8	2 3/4	4 1/8	2 1/2	24.96
72	D40B72	11.750	B	1 1/8	2 3/4	4 1/8	2 1/2	27.88
76	D40B76	12.390	B	1 1/8	2 3/4	4 1/8	2 1/2	30.18
84	D40B84	13.660	B	1 1/8	2 3/4	4 1/8	2 1/2	36.24
95	D40B95	15.410	B	1 1/8	2 3/4	4 1/8	2 1/2	38.84
96	D40B96	15.570	B	1 1/8	2 3/4	4 1/8	2 1/2	39.50
102	D40B102	16.530	B	1 1/8	2 3/4	4 1/8	2 1/2	42.72
112	D40B112	18.120	B	1 1/8	2 3/4	4 1/8	2 1/2	55.54

* Has recessed groove in hub for chain clearance.

Maximum bores shown will accommodate standard keyseat and setscrew over keyseat. Slightly larger bores are possible with no keyseat, shallow keyseat, or setscrew at angle to keyseat.

NOTE: Double 40 stock sprockets with 25 teeth or less have hardened teeth. As indicated by H suffix.



TYPE B

Alteration Charges

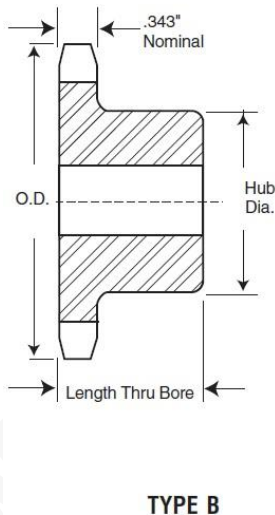
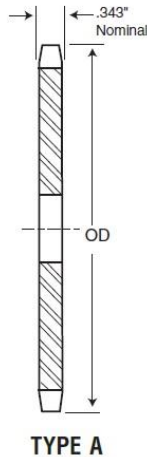
See current discount sheet for alteration charges.



ENGREDAN Elementos de Transmissão Ltda
 Rua Serra de Maracujá, 30 –Parque Reid
 CEP 09920-040

Fone: (11) 2758-6099 / Cel/Whats: (11) 99222-0666 – (11) 93800-3636
 Site: www.engredan.com.br
 E-Mail : vendas@engredan.com.br

ENGRENAGENS ASA 50 SIMPLES PASSO 5/8" – 15,875 MM NORMA ASA AMERICANA



Alteration Charges

See current discount sheet for alteration charges.

Single - Type B

Single - Type A

No. Teeth	Catalog Number	Outside Diameter	Type	Bore (Inches)		Hub (Inches)		Weight Lbs (Approx.)	Type	Catalog Number	Stock Bore	Weight Lbs. (Approx.)
				Stock	Rec. Max.	Diameter	Length Thru					
8	50B8	1.880	B	5/8	5/8	1 1/8*	1	0.25				
9	50B9	2.090	B	5/8	3/4	1 1/8*	1	0.36				
10	50B10	2.300	B	5/8	7/8	1 1/8*	1	0.48				
11	50B11	2.500	B	5/8	1	1 1/8*	1	0.64				
12	50B12	2.710	B	5/8	1 1/4	1 1/8*	1	0.83	A	50A12	5/8	0.34
13	50B13	2.910	B	5/8	1 1/8	1 1/8	1	0.88	A	50A13	5/8	0.42
14	50B14	3.110	B	5/8	1 1/8	2 1/8	1	1.13	A	50A14	5/8	0.50
15	50B15	3.320	B	5/8	1 1/2	2 1/8	1	1.34	A	50A15	5/8	0.54
16	50B16	3.520	B	5/8	1 1/2	2 1/2	1	1.51	A	50A16	5/8	0.68
17	50B17	3.720	B	5/8	1 1/2	2 1/8	1	1.74	A	50A17	5/8	0.76
18	50B18	3.920	B	5/8	1 1/2	2 1/8	1	2.00	A	50A18	5/8	0.86
19	50B19	4.120	B	5/8	2	3	1	2.22	A	50A19	5/8	0.94
20	50B20	4.320	B	5/8	2	3	1	2.28	A	50A20	3/4	1.06
21	50B21	4.520	B	5/8	2	3	1	2.40	A	50A21	3/4	1.12
22	50B22	4.720	B	5/8	2	3	1	2.56	A	50A22	3/4	1.30
23	50B23	4.920	B	5/8	2	3	1	2.66	A	50A23	3/4	1.44
24	50B24	5.120	B	5/8	2	3	1 1/4	3.30	A	50A24	2 1/2	1.50
25	50B25	5.320	B	5/8	2	3	1 1/4	3.40	A	50A25	2 1/2	1.62
26	50B26	5.520	B	5/8	2	3	1 1/4	3.44	A	50A26	2 1/2	1.72
27	50B27	5.720	B	5/8	2	3	1 1/4	3.74	A	50A27	2 1/2	1.96
28	50B28	5.920	B	5/8	2	3	1 1/4	3.80	A	50A28	2 1/2	2.04
29	50B29	6.120	B	5/8	2	3	1 1/4	4.06	A	50A29	2 1/2	2.36
30	50B30	6.320	B	5/8	2 1/4	3 1/4	1 1/4	4.56	A	50A30	2 1/2	2.54
31	50B31	6.520	B	5/8	2 1/4	3 1/4	1 1/4	4.74	A	50A31	2 1/2	2.80
32	50B32	6.720	B	5/8	2 1/4	3 1/4	1 1/4	4.96	A	50A32	2 1/2	2.72
33	50B33	6.920	B	5/8	2 1/4	3 1/4	1 1/4	5.20	A	50A33	2 1/2	3.14
34	50B34	7.120	B	5/8	2 1/4	3 1/4	1 1/4	5.14	A	50A34	2 1/2	3.20
35	50B35	7.320	B	5/8	2 1/4	3 1/4	1 1/4	5.44	A	50A35	2 1/2	3.34
36	50B36	7.520	B	5/8	2 1/4	3 1/4	1 1/4	5.64	A	50A36	2 1/2	3.82
37	50B37	7.720	B	5/8	2 1/4	3 1/4	1 1/4	5.90	A	50A37	2 1/2	3.98
38	50B38	7.920	B	5/8	2 1/4	3 1/4	1 1/4	6.08	A	50A38	2 1/2	4.14
39	50B39	8.120	B	5/8	2 1/4	3 1/4	1 1/4	6.30	A	50A39	2 1/2	4.42
40	50B40	8.320	B	5/8	2 1/4	3 1/4	1 1/4	6.50	A	50A40	2 1/2	4.46
41	50B41	8.520	B	5/8	2 1/4	3 1/4	1 1/4	6.64	A	50A41	2 1/2	4.86
42	50B42	8.720	B	5/8	2 1/4	3 1/4	1 1/4	6.96	A	50A42	2 1/2	4.98
43	50B43	8.910	B	5/8	2 1/4	3 1/4	1 1/4	7.06	A	50A43	2 1/2	5.24
44	50B44	9.110	B	5/8	2 1/4	3 1/4	1 1/4	7.58	A	50A44	2 1/2	5.42
45	50B45	9.310	B	5/8	2 1/4	3 1/4	1 1/4	8.58	A	50A45	2 1/2	5.92
46	50B46	9.510	B	1	2 1/2	3 1/4	1 1/4	8.22	A	50A46	1 1/2	6.42
47	50B47	9.710	B	1	2 1/2	3 1/4	1 1/4	8.48	A	50A47	1 1/2	6.50
48	50B48	9.910	B	1	2 1/2	3 1/4	1 1/4	9.28	A	50A48	1 1/2	6.58
49	50B49	10.110	B	1	2 1/2	3 1/4	1 1/4	9.22	A	50A49	1 1/2	7.06
50	50B50	10.310	B	1	2 1/2	3 1/4	1 1/4	9.88	A	50A50	1 1/2	7.10
51	50B51	10.510	B	1	2 1/2	3 1/4	1 1/4	9.70	A	50A51	1 1/2	7.32
52	50B52	10.710	B	1	2 1/2	3 1/4	1 1/4	10.24	A	50A52	1 1/2	7.98
53	50B53	10.910	B	1	2 1/2	3 1/4	1 1/4	10.48	A	50A53	1 1/2	8.08
54	50B54	11.110	B	1	2 1/2	3 1/4	1 1/4	11.00	A	50A54	1 1/2	8.30
55	50B55	11.310	B	1	2 1/2	3 1/4	1 1/4	10.93	A	50A55	1 1/2	8.56
56	50B56	11.500	B	1	2 1/2	3 1/4	1 1/4	11.50	A	50A56	1 1/2	8.90
57	50B57	11.700	B	1	2 1/2	3 1/4	1 1/4	12.00	A	50A57	1 1/2	9.38
58	50B58	11.900	B	1	2 1/2	3 1/4	1 1/4	11.82	A	50A58	1 1/2	10.30
59	50B59	12.100	B	1	2 1/2	3 1/4	1 1/4	12.32	A	50A59	1 1/2	10.50
60	50B60	12.300	B	1	2 1/2	3 1/4	1 1/4	13.00	A	50A60	1 1/2	10.80
70	50B70	14.290	B	1	2 1/2	3 1/4	1 1/4	18.16	A	50A70	1 1/2	14.00
72	50B72	14.690	B	1	2 1/2	3 1/4	1 1/4	19.48	A	50A72	1 1/2	15.24
76	50B76	15.486	B	1	2 1/2	3 1/4	1 1/4	21.00	A	50A76	1 1/2	20.08
80	50B80	16.280	B	1	2 1/2	4 1/4	1 1/4	24.74	A	50A80	1 1/2	21.00
84	50B84	17.080	B	1	2 1/2	4 1/4	1 1/4	25.50	A	50A84	1 1/2	22.08
95	50B95	19.270	B	1	2 1/2	4 1/4	1 1/4	32.00	A	50A95	1 1/2	27.00
96	50B96	19.470	B	1	2 1/2	4 1/4	1 1/4	32.92	A	50A96	1 1/2	27.40
112	50B112	22.650	B	1	2 1/2	4 1/4	1 1/4	42.00	A	50A112	1 1/2	37.70

* Has recessed groove in hub for chain clearance.

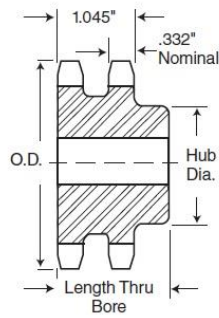
Maximum bores shown will accommodate standard keyseat and setscrew over keyseat. Slightly larger bores are possible with no keyseat, shallow keyseat, or setscrew at angle to keyseat.



ENGREDAN Elementos de Transmissão Ltda
 Rua Serra de Maracujá, 30 –Parque Reid
 CEP 09920-040

Fone: (11) 2758-6099 / Cel/Whats: (11) 99222-0666 – (11) 93800-3636
 Site: www.engredan.com.br
 E-Mail : vendas@engredan.com.br

ENGRENAGENS ASA 50-2 DUPLA PASSO 5/8" – 15,875 MM NORMA ASA AMERICANA



TYPE B

Alteration Charges

See current discount sheet for alteration charges.

Double - Type B

No. Teeth	Catalog Number	Outside Diameter	Type	Bore (Inches)		Hub (Inches)		Weight Lbs. (Approx.)
				Stock	Rec. Max.	Dia.	Length Thru	
11	D50B11H	2.500	B	$\frac{5}{16}$	$\frac{5}{16}$	$1\frac{1}{2}$	$1\frac{1}{4}$	0.96
12	D50B12H	2.710	B	$\frac{5}{16}$	$1\frac{1}{8}$	$1\frac{3}{8}$	$1\frac{1}{4}$	1.25
13	D50B13H	2.910	B	$\frac{5}{16}$	$1\frac{1}{8}$	$1\frac{1}{2}$	$1\frac{1}{4}$	1.56
14	D50B14H	3.110	B	$\frac{5}{16}$	$1\frac{1}{8}$	$2\frac{1}{8}$	$1\frac{1}{4}$	1.86
15	D50B15H	3.320	B	$\frac{3}{8}$	$1\frac{1}{2}$	$2\frac{1}{8}$	$1\frac{1}{4}$	2.22
16	D50B16H	3.520	B	$\frac{3}{8}$	$1\frac{1}{2}$	$2\frac{1}{2}$	$1\frac{1}{4}$	2.62
17	D50B17H	3.720	B	$\frac{3}{8}$	$1\frac{1}{2}$	$2\frac{3}{8}$	$1\frac{1}{4}$	3.04
18	D50B18H	3.920	B	$\frac{3}{8}$	$1\frac{1}{2}$	$2\frac{1}{2}$	$1\frac{1}{4}$	3.58
19	D50B19H	4.120	B	1	$2\frac{1}{2}$	$3\frac{1}{8}$	$1\frac{1}{4}$	3.90
20	D50B20H	4.320	B	1	$2\frac{1}{2}$	$3\frac{1}{4}$	$1\frac{1}{4}$	4.26
21	D50B21H	4.520	B	1	$2\frac{1}{2}$	$3\frac{1}{2}$	$1\frac{1}{4}$	4.90
22	D50B22H	4.720	B	1	$2\frac{1}{2}$	$3\frac{3}{8}$	$1\frac{1}{4}$	5.58
23	D50B23H	4.920	B	1	$2\frac{1}{2}$	$3\frac{1}{2}$	$1\frac{1}{4}$	6.10
24	D50B24H	5.120	B	1	$2\frac{1}{2}$	$3\frac{3}{4}$	$1\frac{1}{4}$	6.50
25	D50B25H	5.320	B	1	$2\frac{1}{2}$	$3\frac{3}{4}$	$1\frac{1}{4}$	6.94
26	D50B26	5.520	B	1	$2\frac{1}{2}$	$3\frac{3}{4}$	$1\frac{1}{4}$	7.54
30	D50B30	6.320	B	1	$2\frac{1}{2}$	$3\frac{3}{4}$	$1\frac{1}{4}$	9.40
32	D50B32	6.720	B	1	$2\frac{1}{2}$	$3\frac{3}{4}$	$1\frac{1}{4}$	10.46
35	D50B35	7.320	B	1	$2\frac{1}{2}$	$3\frac{3}{4}$	$1\frac{1}{4}$	12.28
36	D50B36	7.520	B	$1\frac{1}{16}$	$2\frac{1}{2}$	4	$2\frac{1}{2}$	13.94
40	D50B40	8.320	B	$1\frac{1}{16}$	$2\frac{1}{2}$	4	$2\frac{1}{2}$	16.54
42	D50B42	8.720	B	$1\frac{1}{16}$	$2\frac{1}{2}$	4	$2\frac{1}{2}$	17.92
45	D50B45	9.310	B	$1\frac{1}{16}$	$2\frac{1}{2}$	4	$2\frac{1}{2}$	20.30
48	D50B48	9.910	B	$1\frac{1}{16}$	$2\frac{1}{2}$	$4\frac{1}{4}$	$2\frac{1}{2}$	24.08
52	D50B52	10.710	B	$1\frac{1}{16}$	$2\frac{1}{2}$	$4\frac{1}{4}$	$2\frac{1}{2}$	27.42
54	D50B54	11.110	B	$1\frac{1}{16}$	$2\frac{1}{2}$	$4\frac{1}{4}$	$2\frac{1}{2}$	29.16
60	D50B60	12.300	B	$1\frac{1}{16}$	3	$4\frac{1}{2}$	$2\frac{1}{2}$	35.88
68	D50B68	13.890	B	$1\frac{1}{16}$	3	$4\frac{1}{2}$	$2\frac{1}{2}$	44.98
72	D50B72	14.690	B	$1\frac{1}{16}$	3	$4\frac{1}{2}$	$2\frac{1}{2}$	50.22
76	D50B76	15.490	B	$1\frac{1}{16}$	3	$4\frac{1}{2}$	$2\frac{1}{2}$	45.64
84	D50B84	17.080	B	$1\frac{1}{16}$	3	$4\frac{1}{2}$	$2\frac{1}{2}$	51.64
95	D50B95	19.270	B	$1\frac{1}{16}$	3	$4\frac{1}{2}$	$2\frac{1}{2}$	64.32
96	D50B96	19.470	B	$1\frac{1}{16}$	3	$4\frac{1}{2}$	$2\frac{1}{2}$	67.42
102	D50B102	20.660	B	$1\frac{1}{16}$	3	$4\frac{1}{2}$	$2\frac{1}{2}$	72.68
112	D50B112	22.650	B	$1\frac{1}{16}$	$3\frac{3}{8}$	$5\frac{1}{4}$	$2\frac{1}{2}$	90.22

Maximum bores shown will accommodate standard keyseat and setscrew over keyseat. Slightly larger bores are possible with no keyseat, shallow keyseat, or setscrew at angle to keyseat.

NOTE: Double 50 stock sprockets with 25 teeth or less have hardened teeth, as indicated by H suffix.



ENGREDAN Elementos de Transmissão Ltda
 Rua Serra de Maracujá, 30 –Parque Reid
 CEP 09920-040

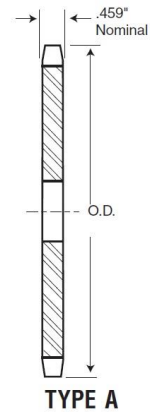
Fone: (11) 2758-6099 / Cel/Whats: (11) 99222-0666 – (11) 93800-3636
 Site: www.engredan.com.br
 E-Mail : vendas@engredan.com.br

ENGRENAGENS ASA 60 SIMPLES PASSO 3/4" – 19,050 MM NORMA ASA AMERICANA

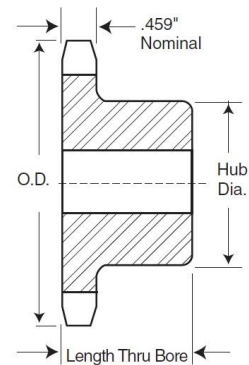
Single - Type B

Single - Type A

No. Teeth	Catalog Number	Outside Diameter	Type	Bore (inches)		Hub (inches)		Weight Lbs (Approx.)	Type	Catalog Number	Stock Bore	Weight Lbs. (Approx.)
				Stock	Rec. Max.	Diameter	Length Thru					
8	60B8	2.260	B	5/8	5/8	1 1/2★	1 1/4	0.54	—	—	—	—
9	60B9	2.510	B	3/4	7/8	1 1/2★	1 1/4	0.64	—	—	—	—
10	60B10	2.760	B	3/4	1 1/8	1 1/2★	1 1/4	0.99	A	60A10	3/4	0.44
11	60B11	3.000	B	3/4	1 1/8	2 1/8★	1 1/4	1.16	A	60A11	3/4	0.54
12	60B12	3.250	B	3/4	1 1/8	2 3/8★	1 1/4	1.47	A	60A12	3/4	0.68
13	60B13	3.490	B	3/4	1 1/2	2 1/2	1 1/4	1.66	A	60A13	3/4	0.80
14	60B14	3.740	B	3/4	1 1/2	2 5/8	1 1/4	2.00	A	60A14	3/4	0.94
15	60B15	3.980	B	3/4	1 1/2	2 3/4	1 1/4	2.51	A	60A15	3/4	1.08
16	60B16	4.220	B	3/4	2	3 1/8	1 1/4	2.81	A	60A16	3/4	1.24
17	60B17	4.460	B	3/4	2 1/4	3 1/4	1 1/4	3.22	A	60A17	3/4	1.44
18	60B18	4.700	B	3/4	2 1/2	3 1/2	1 1/4	3.72	A	60A18	3/4	1.62
19	60B19	4.950	B	3/4	2 3/4	3 1/2	1 1/4	3.92	A	60A19	3/4	1.84
20	60B20	5.190	B	3/4	2 3/4	3 3/8	1 1/4	4.63	A	60A20	3/4	2.12
21	60B21	5.430	B	3/4	2 3/4	4	1 1/4	5.00	A	60A21	3/4	2.28
22	60B22	5.670	B	3/4	2 3/4	4	1 1/4	5.25	A	60A22	3/4	2.48
23	60B23	5.910	B	3/4	2 3/4	4	1 1/4	5.48	A	60A23	3/4	2.68
24	60B24	6.150	B	3/4	2 3/4	4	1 1/4	5.78	A	60A24	29/32	3.00
25	60B25	6.390	B	3/4	2 3/4	4	1 1/4	6.13	A	60A25	29/32	3.34
26	60B26	6.630	B	3/4	2 3/4	4	1 1/4	6.38	A	60A26	29/32	3.54
27	60B27	6.870	B	3/4	2 3/4	4	1 1/4	6.72	A	60A27	29/32	3.96
28	60B28	7.110	B	3/4	2 3/4	4	1 1/4	6.88	A	60A28	29/32	4.14
29	60B29	7.350	B	3/4	2 3/4	4	1 1/4	7.28	A	60A29	29/32	4.40
30	60B30	7.590	B	3/4	2 3/4	4	1 1/4	7.58	A	60A30	29/32	4.78
31	60B31	7.830	B	3/4	2 3/4	4	1 1/4	7.72	A	60A31	29/32	5.24
32	60B32	8.070	B	3/4	2 3/4	4	1 1/4	8.26	A	60A32	29/32	5.52
33	60B33	8.300	B	1	2 3/4	4	1 1/4	8.42	A	60A33	5/16	5.86
34	60B34	8.540	B	1	2 3/4	4	1 1/4	8.80	A	60A34	5/16	6.16
35	60B35	8.780	B	1	2 3/4	4	1 1/4	9.04	A	60A35	5/16	6.78
36	60B36	9.020	B	1	2 3/4	4	1 1/4	9.60	A	60A36	5/16	6.82
37	60B37	9.260	B	1	2 3/4	4	1 1/4	10.24	A	60A37	5/16	7.52
38	60B38	9.500	B	1	2 3/4	4 1/4	1 1/4	10.84	A	60A38	5/16	7.84
39	60B39	9.740	B	1	2 3/4	4 1/4	1 1/4	11.36	A	60A39	5/16	8.28
40	60B40	9.980	B	1	2 3/4	4 1/4	1 1/4	11.50	A	60A40	5/16	8.56
41	60B41	10.220	B	1	2 3/4	4 1/4	1 1/4	12.14	A	60A41	5/16	9.10
42	60B42	10.460	B	1	2 3/4	4 1/4	1 1/4	12.74	A	60A42	5/16	9.84
43	60B43	10.700	B	1	2 3/4	4 1/4	1 1/4	13.00	A	60A43	5/16	9.74
44	60B44	10.940	B	5/16	2 3/4	4 1/4	1 1/4	13.88	A	60A44	5/16	10.76
45	60B45	11.180	B	5/16	2 3/4	4 1/4	1 1/4	13.98	A	60A45	5/16	11.08
46	60B46	11.420	B	5/16	2 3/4	4 1/4	1 1/4	14.60	A	60A46	5/16	11.50
47	60B47	11.650	B	5/16	2 3/4	4 1/4	1 1/4	15.00	A	60A47	5/16	12.32
48	60B48	11.890	B	5/16	2 3/4	4 1/4	1 1/4	15.82	A	60A48	5/16	12.42
49	60B49	12.130	B	5/16	2 3/4	4 1/4	1 1/4	15.90	A	60A49	5/16	12.92
50	60B50	12.370	B	5/16	2 3/4	4 1/4	1 1/4	17.66	A	60A50	5/16	13.98
51	60B51	12.610	B	5/16	2 3/4	4 1/4	1 1/4	16.98	A	60A51	5/16	14.58
52	60B52	12.850	B	5/16	2 3/4	4 1/4	1 1/4	17.93	A	60A52	5/16	14.60
53	60B53	13.090	B	5/16	2 3/4	4 1/4	1 1/4	17.99	A	60A53	5/16	15.84
54	60B54	13.330	B	5/16	2 3/4	4 1/4	1 1/4	21.60	A	60A54	5/16	15.92
55	60B55	13.570	B	1 1/4	2 3/4	4 1/4	1 1/4	21.14	A	60A55	1 1/4	16.96
56	60B56	13.810	B	1 1/4	2 3/4	4 1/4	1 1/4	21.88	A	60A56	1 1/4	17.60
57	60B57	14.040	B	1 1/4	2 3/4	4 1/4	1 1/4	22.26	A	60A57	1 1/4	17.62
58	60B58	14.280	B	1 1/4	2 3/4	4 1/4	1 1/4	22.80	A	60A58	1 1/4	19.00
59	60B59	14.520	B	1 1/4	2 3/4	4 1/4	1 1/4	23.86	A	60A59	1 1/4	19.20
60	60B60	14.760	B	1 1/4	2 3/4	4 1/4	1 1/4	25.22	A	60A60	1 1/4	20.02
64	60B64	15.720	B	1 1/4	2 3/4	4 1/4	1 1/4	27.40	A	60A64	1 1/4	23.00
65	60B65	15.960	B	1 1/4	2 3/4	4 1/4	1 1/4	28.92	A	60A65	1 1/4	23.24
66	—	—	—	—	—	—	—	—	A	60A66	1 1/4	24.42
68	60B68	16.670	B	1 1/4	2 3/4	4 1/4	1 1/4	30.38	A	60A68	1 1/4	25.54
70	60B70	17.150	B	1 1/4	2 3/4	4 1/4	1 1/4	31.98	A	60A70	1 1/4	27.20
72	60B72	17.630	B	1 1/4	2 3/4	4 1/4	2	34.18	A	60A72	1 1/4	28.90
76	60B76	18.580	B	1 1/4	2 3/4	4 1/4	2	38.06	A	60A76	1 1/4	32.34
80	60B80	19.540	B	1 1/4	2 3/4	4 1/4	2	41.88	A	60A80	1 1/4	45.50
84	60B84	20.490	B	1 1/4	3 1/4	4 3/4	2	46.46	A	60A84	1 1/4	40.18
90	60B90	21.930	B	1 1/4	3 1/2	5	2 1/2	63.20	A	60A90	1 1/4	43.44
96	60B96	23.360	B	1 1/4	3 3/4	5 1/2	2 1/2	63.08	A	60A96	1 1/4	52.02
112	60B112	27.180	B	1 1/4	3 3/4	5 1/2	2 1/2	81.78	A	60A112	1 1/4	70.80



TYPE A



TYPE B

Alteration Charges
 See current discount sheet for alteration charges.

★ Has recessed groove in hub for chain clearance.

Maximum bores shown will accommodate standard keyseat and setscrew over keyseat. Slightly larger bores are possible with no keyseat, shallow keyseat, or setscrew at angle to keyseat.



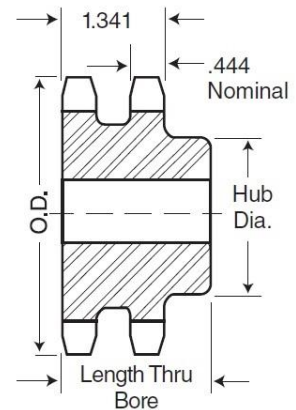
ENGREDAN Elementos de Transmissão Ltda
 Rua Serra de Maracujá, 30 –Parque Reid
 CEP 09920-040

Fone: (11) 2758-6099 / Cel/Whats: (11) 99222-0666 – (11) 93800-3636
 Site: www.engredan.com.br
 E-Mail : vendas@engredan.com.br

ENGRENAGENS ASA 60-2 DUPLA PASSO 3/4" – 19,050 MM NORMA ASA AMERICANA

Double - Type B

No. Teeth	Catalog Number	Outside Diameter	Type	Bore (inches)		Hub (inches)		Weight Lbs. (Approx.)
				Stock	Rec. Max.	Dia.	Length Thru	
11	D60B11H	3.000	B	1	1¼	1 ¹³ / ₁₆	2½	1.62
12	D60B12H	3.250	B	1	1 ⁷ / ₁₆	2½	2½	2.20
13	D60B13H	3.490	B	1	1½	2¼	2½	2.60
14	D60B14H	3.740	B	1	1¾	2½	2½	3.24
15	D60B15H	3.980	B	1	1 ⁷ / ₈	2 ¹³ / ₁₆	2½	3.96
16	D60B16H	4.220	B	1	2	3	2½	4.62
17	D60B17H	4.460	B	1	2¼	3¼	2½	5.40
18	D60B18H	4.700	B	1	2½	3½	2½	6.24
19	D60B19H	4.950	B	1	2½	3 ¹¹ / ₁₆	2½	7.00
20	D60B20H	5.190	B	1	2½	3¾	2½	7.72
21	D60B21H	5.430	B	1	2¾	4¼	2½	8.82
22	D60B22H	5.670	B	1	2¾	4¼	2½	9.68
23	D60B23H	5.910	B	1	2¾	4¼	2½	10.30
24	D60B24H	6.150	B	1	2¾	4¼	2½	11.14
25	D60B25H	6.390	B	1	2¾	4¼	2½	11.96
26	D60B26	6.630	B	1	2¾	4¼	2½	12.70
30	D60B30	7.590	B	1	2¾	4¼	2½	16.36
32	D60B32	8.070	B	1¼	3	4½	2½	19.52
35	D60B35	8.780	B	1¼	3	4½	2½	22.80
36	D60B36	9.020	B	1¼	3	4½	2½	23.82
40	D60B40	9.980	B	1¼	3¼	4¾	2¾	30.84
42	D60B42	10.460	B	1¼	3¼	4¾	2¾	33.08
45	D60B45	11.180	B	1¼	3¼	4¾	2¾	37.08
52	D60B52	12.850	B	1¼	3¼	4¾	2¾	48.70
60	D60B60	14.760	B	1¼	3¼	4¾	2¾	63.10
68	D60C68	16.670	?	1¼	3 ⁵ / ₁₆	5	3	53.68
72	D60C72	17.630	?	1¼	3 ⁵ / ₁₆	5	3	53.74
76	D60C76	18.580	?	1¼	3 ⁵ / ₁₆	5	3	60.28
95	D60C95	23.120	?	1¼	3¾	5½	3½	87.14



TYPE B

Maximum bores shown will accommodate standard keyseat and setscrew over keyseat. Slightly larger bores are possible with no keyseat, shallow keyseat, or setscrew at angle to keyseat.

NOTE: Double 60 stock sprockets with 25 teeth or less have hardened teeth. As indicated by H suffix.

Alteration Charges

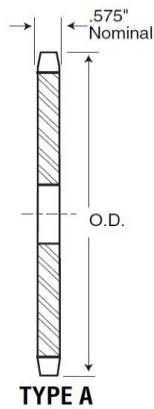
See current discount sheet for alteration charges.



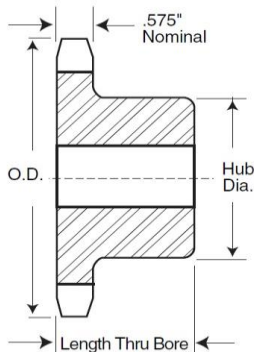
ENGREDAN Elementos de Transmissão Ltda
 Rua Serra de Maracujá, 30 –Parque Reid
 CEP 09920-040

Fone: (11) 2758-6099 / Cel/Whats: (11) 99222-0666 – (11) 93800-3636
 Site: www.engredan.com.br
 E-Mail : vendas@engredan.com.br

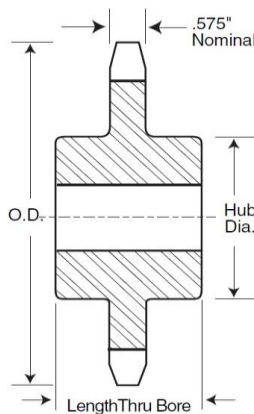
ENGRENAGENS ASA 80-1 SIMPLES PASSO 1" – 25,400MM NORMA ASA AMERICANA



TYPE A



TYPE B



TYPE C

Single - Type B & C

Single - Type A

No. Teeth	Catalog Number	Outside Diameter	Type	Bore (inches)		Hub (inches)		Weight Lbs (Approx.)	Type	Catalog Number	Stock Bore	Weight Lbs. (Approx.)
				Stock	Rec. Max.	Dia.	Length Thru					
8	80B8	3.010	B	1	1	1 ¹ / ₁₆ ★	1 ¹ / ₈	1.4	—	—	—	—
9	80B9	3.350	B	1	1 ¹ / ₁₆	2 ¹ / ₄ ★	1 ¹ / ₈	1.6	A	80A9	1 ¹ / ₁₆	.8
10	80B10	3.680	B	1	1 ¹ / ₈	2 ³ / ₁₆ ★	1 ¹ / ₈	2.2	A	80A10	1 ¹ / ₁₆	1.0
11	80B11	4.010	B	1	1 ¹ / ₈	2 ³ / ₁₆ ★	1 ¹ / ₈	3.2	A	80A11	1 ¹ / ₁₆	1.3
12	80B12	4.330	B	1	1 ¹ / ₈	3 ¹ / ₈ ★	1 ¹ / ₈	3.4	A	80A12	1 ¹ / ₁₆	1.5
13	80B13	4.660	B	1	2	3	1 ¹ / ₈	3.5	A	80A13	1 ¹ / ₁₆	1.8
14	80B14	4.980	B	1	2 ¹ / ₄	3 ¹ / ₄	1 ¹ / ₂	4.1	A	80A14	1 ¹ / ₁₆	2.2
15	80B15	5.300	B	1	2 ¹ / ₂	3 ³ / ₁₆	1 ¹ / ₂	5.3	A	80A15	1 ¹ / ₁₆	2.5
16	80B16	5.630	B	1	2 ³ / ₄	4	1 ¹ / ₂	5.9	A	80A16	1 ¹ / ₁₆	2.9
17	80B17	5.950	B	1	2 ³ / ₄	4	1 ¹ / ₂	6.6	A	80A17	1 ¹ / ₁₆	3.3
18	80B18	6.270	B	1	2 ³ / ₄	4 ¹ / ₄	1 ¹ / ₂	7.3	A	80A18	1 ¹ / ₁₆	3.7
19	80B19	6.590	B	1	2 ³ / ₄	4 ¹ / ₄	1 ¹ / ₂	7.8	A	80A19	1 ¹ / ₁₆	4.1
20	80B20	6.910	B	1	2 ³ / ₄	4 ¹ / ₄	1 ¹ / ₂	8.4	A	80A20	1 ¹ / ₁₆	4.7
21	80B21	7.240	B	1	2 ³ / ₄	4 ¹ / ₄	1 ¹ / ₂	9.4	A	80A21	1 ¹ / ₁₆	4.9
22	80B22	7.560	B	1	2 ³ / ₄	4 ¹ / ₄	1 ¹ / ₂	10.0	A	80A22	1 ¹ / ₁₆	5.5
23	80B23	7.880	B	1	2 ³ / ₄	4 ¹ / ₄	1 ¹ / ₂	10.7	A	80A23	1 ¹ / ₁₆	6.3
24	80B24	8.200	B	1	2 ³ / ₄	4 ¹ / ₄	1 ¹ / ₂	11.3	A	80A24	1 ¹ / ₁₆	6.7
25	80B25	8.520	B	1	2 ³ / ₄	4 ¹ / ₄	1 ¹ / ₂	11.9	A	80A25	1 ¹ / ₁₆	7.2
26	80B26	8.840	B	1 ¹ / ₄	3 ¹ / ₄	4 ¹ / ₄	2	14.3	A	80A26	1 ¹ / ₁₆	7.8
27	80B27	9.160	B	1 ¹ / ₄	3 ¹ / ₄	4 ¹ / ₄	2	15.4	A	80A27	1 ¹ / ₁₆	8.6
28	80B28	9.480	B	1 ¹ / ₄	3 ¹ / ₄	4 ¹ / ₄	2	16.0	A	80A28	1 ¹ / ₁₆	9.3
29	80B29	9.800	B	1 ¹ / ₄	3 ¹ / ₄	4 ¹ / ₄	2	17.1	A	80A29	1 ¹ / ₁₆	9.8
30	80B30	10.110	B	1 ¹ / ₄	3 ¹ / ₄	4 ¹ / ₄	2	17.4	A	80A30	1 ¹ / ₁₆	10.7
31	80B31	10.430	B	1 ¹ / ₄	3 ¹ / ₄	4 ¹ / ₄	2	18.7	A	80A31	1 ¹ / ₁₆	11.3
32	80B32	10.750	B	1 ¹ / ₄	3 ¹ / ₄	4 ¹ / ₄	2	19.5	A	80A32	1 ¹ / ₁₆	12.1
33	80B33	11.070	B	1 ¹ / ₄	3 ¹ / ₄	4 ¹ / ₄	2	19.6	A	80A33	1 ¹ / ₁₆	13.6
34	80B34	11.390	B	1 ¹ / ₄	3 ¹ / ₄	4 ¹ / ₄	2	21.3	A	80A34	1 ¹ / ₁₆	14.3
35	80B35	11.710	B	1 ¹ / ₄	3 ¹ / ₄	4 ¹ / ₄	2	22.1	A	80A35	1 ¹ / ₁₆	14.8
36	80B36	12.030	B	1 ¹ / ₄	3 ¹ / ₄	4 ¹ / ₄	2	23.1	A	80A36	1 ¹ / ₁₆	16.1
37	80B37	12.350	B	1 ¹ / ₄	3 ¹ / ₄	4 ¹ / ₄	2	23.8	A	80A37	1 ¹ / ₁₆	16.8
38	80B38	12.670	B	1 ¹ / ₄	3 ¹ / ₄	4 ¹ / ₄	2	24.7	A	80A38	1 ¹ / ₁₆	17.2
39	80B39	12.990	B	1 ¹ / ₄	3 ¹ / ₄	4 ¹ / ₄	2	25.6	A	80A39	1 ¹ / ₁₆	17.9
40	80B40	13.310	B	1 ¹ / ₄	3 ¹ / ₄	4 ¹ / ₄	2	26.7	A	80A40	1 ¹ / ₁₆	18.9
41	80B41	13.630	B	1 ¹ / ₄	3 ¹ / ₄	4 ¹ / ₄	2	27.8	A	80A41	1 ¹ / ₄	21.0
42	80B42	13.940	B	1 ¹ / ₄	3 ¹ / ₄	4 ¹ / ₄	2	28.7	A	80A42	1 ¹ / ₄	21.8
43	80B43	14.260	B	1 ¹ / ₄	3 ¹ / ₄	4 ¹ / ₄	2	29.4	A	80A43	1 ¹ / ₄	23.6
44	80B44	14.580	B	1 ¹ / ₄	3 ¹ / ₄	4 ¹ / ₄	2	29.9	A	80A44	1 ¹ / ₄	24.3
45	80B45	14.900	B	1 ¹ / ₄	3 ¹ / ₄	4 ¹ / ₄	2	31.4	A	80A45	1 ¹ / ₄	25.2
46	80B46	15.220	B	1 ¹ / ₄	3 ¹ / ₄	4 ¹ / ₄	2	33.1	A	80A46	1 ¹ / ₄	26.6
47	80B47	15.540	B	1 ¹ / ₄	3 ¹ / ₄	4 ¹ / ₄	2	34.0	A	80A47	1 ¹ / ₄	26.4
48	80B48	15.860	B	1 ¹ / ₄	3 ¹ / ₄	4 ¹ / ₄	2	35.5	A	80A48	1 ¹ / ₄	27.8
49	80B49	16.180	B	1 ¹ / ₄	3 ¹ / ₄	4 ¹ / ₄	2	35.8	A	80A49	1 ¹ / ₄	28.9
50	80B50	16.500	B	1 ¹ / ₄	3 ¹ / ₄	4 ¹ / ₄	2	37.3	A	80A50	1 ¹ / ₄	30.9
51	80B51	16.810	B	1 ¹ / ₄	3 ¹ / ₄	4 ¹ / ₄	2	38.6	A	80A51	1 ¹ / ₄	32.2
52	80B52	17.130	B	1 ¹ / ₄	3 ¹ / ₄	4 ¹ / ₄	2	39.4	A	80A52	1 ¹ / ₄	33.0
53	80B53	17.450	B	1 ¹ / ₄	3 ¹ / ₄	4 ¹ / ₄	2	41.3	A	80A53	1 ¹ / ₄	34.9
54	80B54	17.770	B	1 ¹ / ₄	3 ¹ / ₂	5 ¹ / ₄	2	44.7	A	80A54	1 ¹ / ₄	36.6
55	80B55	18.090	B	1 ¹ / ₄	3 ¹ / ₂	5 ¹ / ₄	2	45.6	A	80A55	1 ¹ / ₄	37.5
56	80B56	18.410	B	1 ¹ / ₄	3 ¹ / ₂	5 ¹ / ₄	2	47.5	A	80A56	1 ¹ / ₄	39.4
57	80B57	18.730	B	1 ¹ / ₄	3 ¹ / ₂	5 ¹ / ₄	2	48.5	A	80A57	1 ¹ / ₄	40.4
58	80B58	19.040	B	1 ¹ / ₄	3 ¹ / ₂	5 ¹ / ₄	2	50.5	A	80A58	1 ¹ / ₄	41.3
59	80B59	19.360	B	1 ¹ / ₄	3 ¹ / ₂	5 ¹ / ₄	2	52.1	A	80A59	1 ¹ / ₄	42.9
60	80B60	19.680	B	1 ¹ / ₄	3 ¹ / ₂	5 ¹ / ₄	2	54.5	A	80A60	1 ¹ / ₄	45.3
65	80B65	21.270	B	1 ¹ / ₄	3 ¹ / ₂	5 ¹ / ₄	2	61.8	A	80A65	1 ¹ / ₄	52.2
70	80C70	22.870	C	1 ¹ / ₂	4 ¹ / ₄	6 ¹ / ₄	3 ¹ / ₂	75.7	A	80A70	1 ¹ / ₂	59.8
72	80C72	23.500	C	1 ¹ / ₂	4 ¹ / ₄	6 ¹ / ₄	3 ¹ / ₂	81.4	A	80A72	1 ¹ / ₂	65.7
76	80C76	24.780	C	1 ¹ / ₂	4 ¹ / ₄	6 ¹ / ₄	3 ¹ / ₂	87.8	A	80A76	1 ¹ / ₂	70.2
80	80C80	26.050	C	1 ¹ / ₂	4 ¹ / ₄	6 ¹ / ₄	3 ¹ / ₂	89.9	A	80A80	1 ¹ / ₂	79.6
84	80C84	27.330	C	1 ¹ / ₂	4 ¹ / ₄	6 ¹ / ₄	3 ¹ / ₂	99.2	A	80A84	1 ¹ / ₂	86.1
90	80C90	29.240	C	1 ¹ / ₂	4 ¹ / ₄	6 ¹ / ₄	3 ¹ / ₂	106.0	A	80A90	1 ¹ / ₂	101.0
96	80C96	31.150	C	1 ¹ / ₂	4 ¹ / ₄	6 ¹ / ₄	3 ¹ / ₂	117.0	A	80A96	1 ¹ / ₂	120.0
112	80C112	36.240	C	1 ¹ / ₂	4 ¹ / ₄	6 ¹ / ₄	3 ¹ / ₂	154.0	A	80A112	1 ¹ / ₂	165.0

★ Has recessed groove in hub for chain clearance.

Maximum bores shown will accommodate standard keyseat and setscrew over keyseat. Slightly larger bores are possible with no keyseat, shallow keyseat, or setscrew at angle to keyseat.

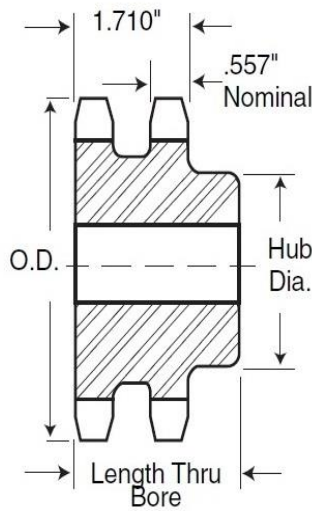


ENGREDAN Elementos de Transmissão Ltda
 Rua Serra de Maracujá, 30 –Parque Reid
 CEP 09920-040

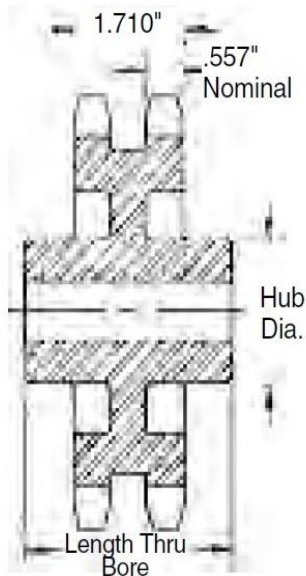
Fone: (11) 2758-6099 / Cel/Whats: (11) 99222-0666 – (11) 93800-3636
 Site: www.engredan.com.br
 E-Mail : vendas@engredan.com.br

ENGRENAGENS ASA 80-2 DUPLA PASSO 1" – 25,400 MM NORMA ASA AMERICANA

Double - Type B & C



TYPE B



TYPE C

Alteration Charges
 See current discount sheet for alteration charges.

No. Teeth	Catalog Number	Outside Diameter	Type	Bore (inches)		Hub (inches)		Weight Lbs. (Approx.)
				Stock	Rec. Max.	Dia.	Length Thru	
10	D80B10H	3.680	B	1	1½	2 ⁹ / ₁₆ ★	2¼	3.6
11	D80B11H	4.010	B	1	1¾	2½	2½	4.0
12	D80B12H	4.330	B	1	1 ⁷ / ₈	2 ²⁷ / ₃₂	2½	5.1
13	D80B13H	4.660	B	1	2¼	3 ⁵ / ₃₂	2½	6.3
14	D80B14H	4.980	B	1	2 ³ / ₈	3 ¹⁵ / ₃₂	2½	7.6
15	D80B15H	5.300	B	1	2½	3 ⁵¹ / ₆₄	2½	9.0
16	D80B16H	5.630	B	1	2¾	4	2¾	11.0
17	D80B17H	5.950	B	1	3	4 ²⁷ / ₆₄	2¾	13.2
18	D80B18H	6.270	B	1	3¼	4 ⁴⁷ / ₆₄	2¾	15.0
19	D80B19H	6.590	B	1	3 ⁵ / ₁₆	5	2¾	17.0
20	D80B20H	6.910	B	1	3 ⁵ / ₁₆	5	2¾	18.2
21	D80B21H	7.240	B	1	3 ⁵ / ₁₆	5	2¾	19.6
22	D80B22H	7.560	B	1	3 ⁵ / ₁₆	5	2¾	21.0
23	D80B23H	7.880	B	1	3 ⁵ / ₁₆	5	2¾	22.8
24	D80B24H	8.200	B	1	3½	5¼	2¾	25.1
25	D80B25H	8.520	B	1	3½	5¼	3	28.3
26	D80B26	8.840	B	1	3½	5¼	3	29.9
30	D80B30	10.110	B	1¼	3¾	5¾	3	39.5
32	D80B32	10.750	B	1¼	3¾	5¾	3	43.8
35	D80B35	11.710	B	1¼	3¾	5¾	3	49.1
36	D80B36	12.030	B	1¼	3¾	5¾	3 ¹ / ₈	54.2
42	D80B42	13.940	B	1¼	3¾	5¾	3 ¹ / ₈	71.5
45	D80B45	14.900	B	1¼	3¾	5¾	3 ¹ / ₈	73.5
52	D80C52	17.130	C	1½	3¾	5¾	3¾	78.4
60	D80C60	19.680	C	1½	3¾	5¾	3¾	93.3
68	D80C68	22.230	C	1½	3 ¹³ / ₁₆	6	4	96.2
76	D80C76	24.780	C	1½	3 ¹³ / ₁₆	6	4	113.0
95	D80C95	30.830	C	1½	4	6	4¼	165.0

★ Has recessed groove in hub for chain clearance.

Maximum bores shown will accommodate standard keyseat and setscrew over keyseat. Slightly larger bores are possible with no keyseat, shallow keyseat, or setscrew at angle to keyseat.

NOTE: Double 80 stock sprockets with 25 teeth or less have hardened teeth, as indicated by H suffix.



ENGREDAN Elementos de Transmissão Ltda
 Rua Serra de Maracujá, 30 –Parque Reid
 CEP 09920-040

Fone: (11) 2758-6099 / Cel/Whats: (11) 99222-0666 – (11) 93800-3636
 Site: www.engredan.com.br
 E-Mail : vendas@engredan.com.br

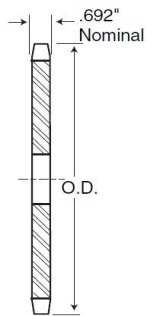
ENGRENAGENS ASA 100-1 SIMPLES

PASSO 1.1/4" – 31,750

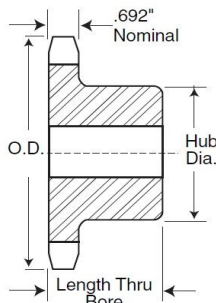
NORMA ASA AMERICANA

Single - Type B & C

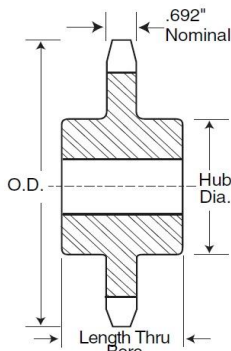
Single-Type A



TYPE A



TYPE B



TYPE C

Alteration Charges

See current discount sheet for alteration charges.

No. Teeth	Catalog Number	Outside Diameter	Type	Bore (inches)		Hub (inches)		Weight Lbs. (Approx.)	Type	Catalog Number	Stock Bore	Weight Lbs. (Approx.)
				Stock	Rec. Max.	Diameter	Length Thru					
7		3.350							A	100A7	1	1.2
8	100B8	3.770	B	1	1 1/4	2 7/16 ★	1 1/8	2.3	A	100A8	1	1.4
9	100B9	4.180	B	1	1 1/2	2 9/16 ★	1 1/8	3.2	A	100A9	1	1.6
10	100B10	4.600	B	1	1 5/8	3 1/4 ★	1 1/8	4.1	A	100A10	1	2.0
11	100B11	5.010	B	1	2 1/4	3 5/8 ★	1 1/8	5.3	A	100A11	1 1/2	2.5
12	100B12	5.420	B	1	2 1/2	4 ★	1 1/8	6.4	A	100A12	1 1/2	3.0
13	100B13	5.820	B	1	2 3/4	3 7/8	1 1/8	6.6	A	100A13	1 1/2	3.5
14	100B14	6.230	B	1 1/4	2 3/4	4 1/8	1 1/8	7.4	A	100A14	1 1/2	4.1
15	100B15	6.630	B	1 1/4	3	4 1/2	1 1/8	9.2	A	100A15	1 1/2	4.7
16	100B16	7.030	B	1 1/2	3	4 1/2	1 1/8	9.9	A	100A16	1 1/2	5.4
17	100B17	7.440	B	1 1/2	3	4 1/2	1 1/8	10.8	A	100A17	1 1/2	6.1
18	100B18	7.840	B	1 1/2	3	4 1/2	1 1/8	11.5	A	100A18	1 1/2	7.0
19	100B19	8.240	B	1 1/2	3	4 1/2	2	13.1	A	100A19	1 1/2	7.8
20	100B20	8.640	B	1 1/2	3	4 1/2	2	14.2	A	100A20	1 1/2	8.8
21	100B21	9.040	B	1 1/2	3	4 1/2	2	15.3	A	100A21	1 1/2	9.8
22	100B22	9.440	B	1 1/2	3	4 1/2	2	16.1	A	100A22	1 1/2	10.5
23	100B23	9.840	B	1 1/2	3	4 1/2	2	17.2	A	100A23	1 1/2	11.8
24	100B24	10.250	B	1 1/2	3	4 1/2	2	19.2	A	100A24	1 1/2	12.8
25	100B25	10.650	B	1 1/2	3	4 1/2	2	19.5	A	100A25	1 1/2	13.9
26	100B26	11.050	B	1 1/2	3 3/8	5	2	21.7	A	100A26	1 1/2	15.0
27	100B27	11.440	B	1 1/2	3 3/8	5	2	23.0	A	100A27	1 1/2	16.0
28	100B28	11.840	B	1 1/2	3 3/8	5	2	24.4	A	100A28	1 1/2	17.4
29	100B29	12.240	B	1 1/2	3 3/8	5	2	25.0	A	100A29	1 1/2	19.6
30	100B30	12.640	B	1 1/2	3 3/8	5	2	26.9	A	100A30	1 1/2	20.1
31		13.040							A	100A31	1 1/2	21.5
32	100B32	13.440	B	1 1/2	3 3/8	5	2	29.8	A	100A32	1 1/2	22.6
33		13.840							A	100A33	1 1/2	24.1
34		14.240							A	100A34	1 1/2	26.0
35	100B35	14.640	B	1 1/2	3 3/8	5	2 1/2	36.9	A	100A35	1 1/2	27.2
36	100B36	15.040	B	1 1/2	3 3/8	5	2 1/2	38.6	A	100A36	1 1/2	30.0
37		15.440							A	100A37	1 1/2	31.0
38	100B38	15.840	B	1 1/2	3 3/8	5	2 1/2	41.5	A	100A38	1 1/2	33.0
39	100B39	16.230	B	1 1/2	3 3/8	5	2 1/2	43.6	A	100A39	1 1/2	35.0
40	100B40	16.630	B	1 1/2	3 3/8	5	2 1/2	46.9	A	100A40	1 1/2	36.0
41		17.030							A	100A41	1 1/2	39.0
42	100B42	17.430	B	1 1/2	3 3/8	5	2 1/2	50.4	A	100A42	1 1/2	40.0
43		17.830							A	100A43	1 1/2	43.0
44		18.230							A	100A44	1 1/2	45.0
45	100B45	18.630	B	1 1/2	3 3/8	5	2 1/2	54.0	A	100A45	1 1/2	47.0
46		19.020							A	100A46	1 1/2	48.0
47		19.420							A	100A47	1 1/2	52.0
48	100B48	19.820	B	1 1/2	4	6	2 1/2	66.0	A	100A48	1 1/2	54.0
49		20.220							A	100A49	1 1/2	56.0
50		20.620							A	100A50	1 1/2	57.0
51		21.020							A	100A51	1 1/2	63.0
52		21.420							A	100A52	1 1/2	64.0
53		21.810							A	100A53	1 1/2	64.2
54	100C54	22.210	C	1 1/2	4	6	3 1/4	78.0	A	100A54	1 1/2	68.0
55		22.610							A	100A55	1 1/2	70.0
56		23.010							A	100A56	1 1/2	72.0
57		23.410							A	100A57	1 1/2	75.8
58		23.810							A	100A58	1 1/2	76.0
59		24.200							A	100A59	1 1/2	77.0
60	100C60	24.600	C	1 1/2	4	6	3 1/4	89.0	A	100A60	1 1/2	80.0
70	100C70	28.580	C	1 1/2	5 1/4	7	3 3/4	125.0	A	100A70	1 1/2	113
72	100C72	29.380	C	1 1/2	5 1/4	7	3 3/4	134.0	A	100A72	1 1/2	119
76	100C76	30.973	C	1 1/2	5 1/4	7	3 3/4	143.0	A	100A76	1 1/2	133
80	100C80	32.570	C	1 1/2	5 1/4	7	3 3/4	151.0	A	100A80	1 1/2	146
84	100C84	34.160	C	1 1/2	5 1/4	7	3 3/4	170.0	A	100A84	1 1/2	162
90	100C90	36.550	C	1 1/2	5 1/4	7	3 3/4	184.0	A	100A90	1 1/2	193
96	100C96	38.930	C	1 1/2	5 1/4	7	4 1/4	203.0	A	100A96	1 1/2	215

★ Has recessed groove in hub for chain clearance.

Maximum bores shown will accommodate standard keyseat and setscrew over keyseat. Slightly larger bores are possible with no keyseat, shallow keyseat, or setscrew at angle to keyseat.

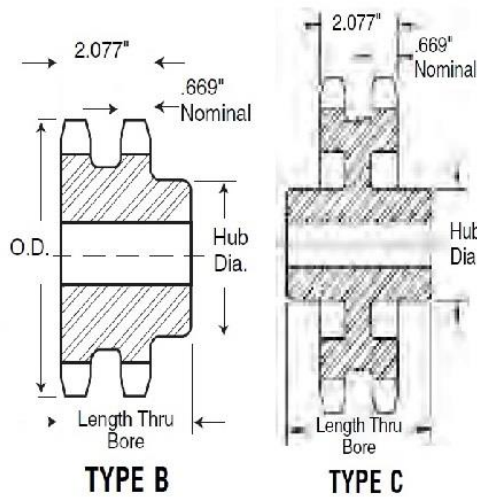


ENGREDAN Elementos de Transmissão Ltda
 Rua Serra de Maracujá, 30 –Parque Reid
 CEP 09920-040

Fone: (11) 2758-6099 / Cel/Whats: (11) 99222-0666 – (11) 93800-3636
 Site: www.engredan.com.br
 E-Mail : vendas@engredan.com.br

ENGRENAGENS ASA 100-2 DUPLA PASSO 1.1/4" – 31,750 MM NORMA ASA AMERICANA

Double - Type B & C



Alteration Charges

See current discount sheet for alteration charges.

No. Teeth	Catalog Number	Outside Diameter	Type	Bore (inches)		Hub (inches)		Weight Lbs. (Approx.)
				Stock	Rec. Max.	Dia.	Length Thru	
9	D100B9	4.180	B	1	1 $\frac{1}{8}$	2 $\frac{3}{8}$	2 $\frac{7}{8}$	4.6
10	D100B10	4.600	B	1	1 $\frac{1}{8}$	2 $\frac{3}{8}$	2 $\frac{7}{8}$	6.2
11	D100B11	5.010	B	1	2 $\frac{1}{8}$	3 $\frac{1}{8}$	2 $\frac{7}{8}$	7.9
12	D100B12	5.420	B	1 $\frac{1}{8}$	2 $\frac{1}{4}$	3 $\frac{3}{8}$	2 $\frac{7}{8}$	9.3
13	D100B13	5.820	B	1 $\frac{1}{8}$	2 $\frac{1}{2}$	3 $\frac{3}{8}$	2 $\frac{7}{8}$	11.4
14	D100B14	6.230	B	1 $\frac{1}{8}$	2 $\frac{3}{4}$	4 $\frac{3}{16}$	2 $\frac{7}{8}$	13.6
15	D100B15	6.630	B	1 $\frac{1}{4}$	3 $\frac{1}{8}$	4 $\frac{5}{8}$	3 $\frac{1}{8}$	17.1
16	D100B16	7.030	B	1 $\frac{1}{4}$	3 $\frac{1}{2}$	5	3 $\frac{1}{8}$	20.1
17	D100B17	7.440	B	1 $\frac{1}{4}$	3 $\frac{3}{8}$	5 $\frac{1}{2}$	3 $\frac{1}{8}$	23.1
18	D100B18	7.840	B	1 $\frac{1}{4}$	3 $\frac{1}{2}$	5 $\frac{1}{2}$	3 $\frac{1}{8}$	25.4
19	D100B19	8.240	B	1 $\frac{1}{4}$	3 $\frac{3}{4}$	5 $\frac{1}{2}$	3 $\frac{3}{8}$	29.6
20	D100B20	8.640	B	1 $\frac{1}{4}$	3 $\frac{3}{4}$	5 $\frac{1}{2}$	3 $\frac{3}{8}$	32.4
21	D100B21	9.040	B	1 $\frac{1}{4}$	3 $\frac{3}{4}$	5 $\frac{1}{2}$	3 $\frac{3}{8}$	35.3
22	D100B22	9.440	B	1 $\frac{1}{4}$	3 $\frac{3}{4}$	5 $\frac{1}{2}$	3 $\frac{3}{8}$	38.4
23	D100B23	9.840	B	1 $\frac{1}{4}$	3 $\frac{3}{4}$	5 $\frac{1}{2}$	3 $\frac{3}{8}$	41.3
24	D100B24	10.250	B	1 $\frac{1}{4}$	3 $\frac{3}{4}$	5 $\frac{1}{2}$	3 $\frac{3}{8}$	45.1
25	D100B25	10.650	B	1 $\frac{1}{4}$	3 $\frac{3}{4}$	5 $\frac{1}{2}$	3 $\frac{3}{8}$	48.5
26	D100B26	11.050	B	1 $\frac{1}{2}$	3 $\frac{3}{4}$	5 $\frac{1}{2}$	3 $\frac{3}{8}$	51.5
30	D100B30	12.640	B	1 $\frac{1}{2}$	3 $\frac{3}{4}$	5 $\frac{1}{2}$	3 $\frac{3}{8}$	65.0
35	D100C35	14.640	C	1 $\frac{1}{2}$	3 $\frac{13}{16}$	6	4 $\frac{1}{4}$	75.0
45	D100C45	18.630	C	1 $\frac{1}{2}$	3 $\frac{13}{16}$	6	4 $\frac{1}{2}$	103.0
60	D100C60	24.600	C	1 $\frac{1}{2}$	5 $\frac{3}{8}$	7 $\frac{1}{2}$	5	175.0
70	D100C70	28.580	C	1 $\frac{1}{2}$	5 $\frac{3}{8}$	7 $\frac{1}{2}$	5	197.0
80	D100C80	32.570	C	1 $\frac{1}{2}$	5 $\frac{3}{8}$	7 $\frac{1}{2}$	5	231.0

Maximum bores shown will accommodate standard keyseat and setscrew over keyseat. Slightly larger bores are possible with no keyseat, shallow keyseat, or setscrew at angle to keyseat.

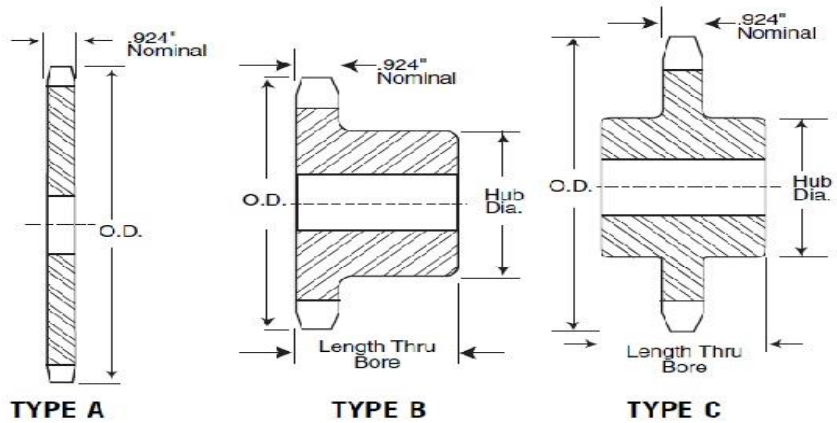


ENGREDAN Elementos de Transmissão Ltda
 Rua Serra de Maracujá, 30 –Parque Reid
 CEP 09920-040

Fone: (11) 2758-6099 / Cel/Whats: (11) 99222-0666 – (11) 93800-3636
 Site: www.engredan.com.br
 E-Mail : vendas@engredan.com.br

ENGRENAGENS ASA 120 SIMPLES PASSO 1.1/2" – 38,100 MM NORMA ASA AMERICANA

Alteration Charges
 See current discount sheet for alteration charges.



Single - Type B & C

Single - Type A

No. Teeth	Catalog Number	Outside Diameter	Type	Bore (inches)		Hub (inches)		Weight Lbs. (Approx.)	Type	Catalog Number	Stock Bore	Weight Lbs. (Approx.)
				Stock	Rec. Max.	Dia.	Length Thru					
8	—	4.520	—	—	—	—	—	—	A	120A8	1 1/2	2.4
9	120B9	5.020	B	1 1/8	1 3/16	3 3/8 *	2 1/2	5.3	A	120A9	1 1/2	3.0
10	120B10	5.520	B	1 1/8	2 1/4	3 3/8 *	2 1/2	7.1	A	120A10	1 1/2	3.8
11	120B11	6.010	B	1 1/8	2 3/8	3 3/8 *	2 1/2	7.6	A	120A11	1 1/2	4.8
12	120B12	6.500	B	1 1/8	2 3/4	4 1/8	2 1/2	9.9	A	120A12	1 1/2	5.8
13	120B13	6.990	B	1 1/8	3	4 1/8	2 1/2	12.4	A	120A13	1 1/2	6.7
14	120B14	7.470	B	1 1/8	3 1/4	4 1/8	2 1/2	14.4	A	120A14	1 1/2	8.0
15	120B15	7.960	B	1 1/8	3 3/4	4 1/8	2 1/2	16.7	A	120A15	1 1/2	9.1
16	120B16	8.440	B	1 1/4	3 1/2	5 1/4	2 1/2	19.9	A	120A16	1 1/2	10.6
17	120B17	8.920	B	1 1/4	3 3/8	5 1/4	2 1/2	20.8	A	120A17	1 1/2	12.6
18	120B18	9.410	B	1 1/4	3 1/2	5 1/4	2 1/2	22.2	A	120A18	1 1/2	13.6
19	120B19	9.890	B	1 1/4	3 3/8	5 1/4	2 1/2	24.8	A	120A19	1 1/2	15.1
20	120B20	10.370	B	1 1/4	3 3/4	5 1/4	2 1/2	25.8	A	120A20	1 1/2	16.9
21	120B21	10.850	B	1 1/4	3 3/8	5 1/4	2 1/2	26.7	A	120A21	1 1/2	18.7
22	120B22	11.330	B	1 1/4	3 3/8	5 1/4	2 1/2	28.2	A	120A22	1 1/2	20.0
23	120B23	11.810	B	1 1/4	3 3/8	5 1/4	2 1/2	30.3	A	120A23	1 1/2	22.1
24	120B24	12.290	B	1 1/4	3 3/4	5 1/4	2 1/2	32.1	A	120A24	1 1/2	24.8
25	120B25	12.770	B	1 1/4	3 3/8	5 1/4	2 1/2	34.6	A	120A25	1 1/2	26.8
26	120B26	13.250	B	1 1/2	4	6	2 1/2	40.0	A	120A26	1 1/2	28.3
27	—	13.730	—	—	—	—	—	—	A	120A27	1 1/2	30.9
28	120B28	14.210	B	1 1/2	4	6	2 1/2	44.9	A	120A28	1 1/2	33.6
30	120B30	15.170	B	1 1/2	4	6	2 1/2	50.2	A	120A30	1 1/2	39.0
32	120B32	16.130	B	1 1/2	4	6	2 1/2	56.0	A	120A32	1 1/2	43.9
33	—	16.610	—	—	—	—	—	—	A	120A33	1 1/2	48.2
34	—	17.090	—	—	—	—	—	—	A	120A34	1 1/2	50.0
35	120B35	17.570	B	1 1/2	4	6	2 1/2	62.4	A	120A35	1 1/2	52.0
36	120B36	18.050	B	1 1/2	4	6	2 1/2	66.4	A	120A36	1 1/2	56.0
40	120C40	19.960	C	1 1/2	4	6	3 3/4	92.0	A	120A40	1 1/2	71.0
42	120C42	20.920	C	1 1/2	4	6	3 3/4	98.0	A	120A42	1 1/2	75.0
45	120C45	22.350	C	1 1/2	4	6	3 3/4	99.2	A	120A45	1 1/2	88.0
48	120C48	23.790	C	1 1/2	4	6	4	113.0	A	120A48	1 1/2	103.0
54	120C54	26.650	C	1 1/2	4	6	4	133.0	A	120A54	1 1/2	140.0
60	120C60	29.520	C	1 1/2	5 1/4	7	4	160.0	A	120A60	1 1/2	160.0
70	120C70	34.300	C	1 1/2	5 3/8	7 1/2	4 1/2	206.0	A	120A70	1 1/2	216.0
80	120C80	39.080	C	1 1/2	5 3/8	7 1/2	4 1/2	254.0	A	120A80	1 1/2	284.0
90	—	43.850	—	—	—	—	—	—	A	120A90	1 1/2	358.0

* Has recessed groove in hub for chain clearance.

Maximum bores shown will accommodate standard keyseat and setscrew over keyseat. Slightly larger bores are possible with no keyseat, shallow keyseat, or setscrew at angle to keyseat.



ENGREDAN Elementos de Transmissão Ltda
 Rua Serra de Maracujá, 30 –Parque Reid
 CEP 09920-040

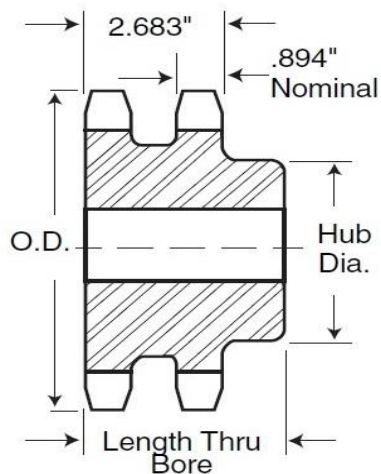
Fone: (11) 2758-6099 / Cel/Whats: (11) 99222-0666 – (11) 93800-3636
 Site: www.engredan.com.br
 E-Mail : vendas@engredan.com.br

ENGRENAGENS ASA 120-2 DUPLA PASSO 1.1/2" – 38,100 MM NORMA ASA AMERICANA

Double - Type B & C

No. Teeth	Catalog Number	Outside Diameter	Type	Bore (inches)		Hub (inches)		Weight Lbs. (Approx.)
				Stock	Rec. Max.	Dia.	Length Thru	
11	D120B11	6.010	B	1½	2¾	3⅞	3¾	13.6
12	D120B12	6.500	B	1½	2¾	4⅞	3¾	17.3
13	D120B13	6.990	B	1½	3	4½	3¾	21.1
14	D120B14	7.470	B	1½	3⅞	5	3¾	25.6
15	D120B15	7.960	B	1½	3½	5¼	3¾	29.9
16	D120B16	8.440	B	1½	3½	5¼	3¾	33.8
17	D120B17	8.920	B	1½	3½	5¼	3¾	36.9
18	D120B18	9.410	B	1½	3½	5¼	3¾	41.9
19	D120B19	9.890	B	1½	3½	5¼	3¾	46.5
20	D120B20	10.370	B	1½	3½	5½	3¾	50.2
21	D120B21	10.850	B	1½	3½	5½	3¾	55.6
22	D120B22	11.330	B	1½	3⅞	5¾	4	64.0
23	D120B23	11.810	B	1½	4	6½	4	75.0
24	D120B24	12.290	B	1½	4	6½	4	79.0
25	D120B25	12.770	B	1½	4	6½	4	84.0
26	D120B26	13.250	B	1½	4	6½	4	90.0
30	D120B30	15.170	B	1½	4	6½	4	119.0
35	D120C35	17.570	C	1½	5¾	7½	6	148.0
45	D120C45	22.350	C	1½	5¾	7½	6	188.0
60	D120C60	29.520	C	1½	6¾	9½	6¼	307.0

Maximum bores shown will accommodate standard keyseat and setscrew over keyseat. Slightly larger bores are possible with no keyseat, shallow keyseat, or setscrew at angle to keyseat.



TYPE B

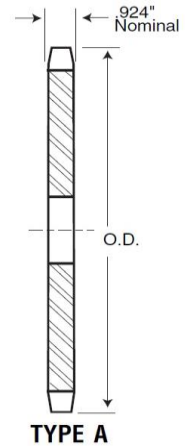




ENGREDAN Elementos de Transmissão Ltda
 Rua Serra de Maracujá, 30 –Parque Reid
 CEP 09920-040

Fone: (11) 2758-6099 / Cel/Whats: (11) 99222-0666 – (11) 93800-3636
 Site: www.engredan.com.br
 E-Mail : vendas@engredan.com.br

ENGRENAGENS ASA 140 SIMPLES PASSO 1.3/4”- 44,450 MM NORMA ASA AMERICANA

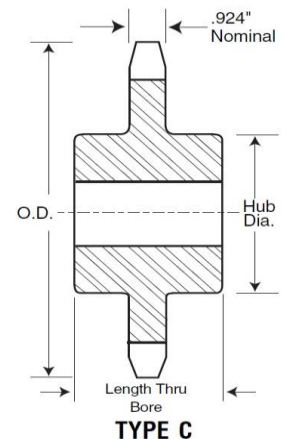
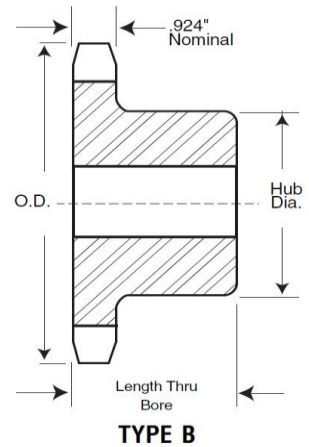


Single - Type B & C

Single - Type A

No. Teeth	Catalog Number	Outside Diameter	Type	Bore (inches)		Hub (inches)		Weight Lbs (Approx.)	Type	Catalog Number	Stock Bore	Weight Lbs. (Approx.)
				Stock	Rec. Max.	Dia.	Length Thru					
11	140B11	7.010	B	1½	2¼	4¼	2¼	11.3	A	140A11	1½	5.0
12	140B12	7.580	B	1½	3	4½	2¼	13.2	A	140A12	1½	7.8
13	140B13	8.150	B	1½	3½	5½	2½	18.9	A	140A13	1½	8.2
14	140B14	8.720	B	1½	3¾	5½	2½	20.4	A	140A14	1½	10.0
15	140B15	9.280	B	1½	4¼	6¼	2½	25.1	A	140A15	1½	11.0
16	140B16	9.850	B	1½	4¼	6¼	2½	27.9	A	140A16	1½	14.0
17	140B17	10.410	B	1½	4¼	6¼	2½	29.8	A	140A17	1½	16.0
18	140B18	10.980	B	1½	4¼	6¼	2½	32.0	A	140A18	1½	18.0
19	140B19	11.540	B	1½	4¼	6¼	2½	34.1	A	140A19	1½	21.0
20	140B20	12.100	B	1½	4¼	6¼	2½	36.0	A	140A20	1½	23.0
21	140B21	12.660	B	1½	4¼	6¼	2½	38.7	A	140A21	1½	25.0
22	140B22	13.220	B	1½	4¼	6¼	2½	40.6	A	140A22	1½	28.0
23	140B23	13.780	B	1½	4¼	6¼	2½	42.1	A	140A23	1½	30.0
24	140B24	14.340	B	1½	4¼	6¼	2½	46.2	A	140A24	1½	33.0
25	140B25	14.900	B	1½	4¼	6¼	2½	47.8	A	140A25	1½	34.0
26	140B26	15.460	B	1½	4¼	6¼	3	57.2	A	140A26	1½	39.0
27	140B27	16.020	B	1½	4¼	6¼	3	58.5	A	140A27	1½	41.0
28	140B28	16.580	B	1½	4¼	6¼	3	62.2	A	140A28	1½	45.0
30	140B30	17.700	B	1½	4¼	6¼	3	69.8	A	140A30	1½	52.0
31	-	18.260	-	-	-	-	-	-	-	140A31	1½	56.0
32	140B32	18.820	B	1½	4¼	6¼	3	76.3	A	140A32	1½	60.0
35	140C35	20.490	C	1½	5¼	7	4	108.0	A	140A35	1½	73.0
36	-	21.050	-	-	-	-	-	-	-	140A36	1½	77.0
40	140C40	23.290	C	1½	5¼	7	4	121.0	A	140A40	1½	93.0
45	140C45	26.080	C	1½	5¼	7	4	142.0	A	140A45	1½	131.0
48	140C48	27.750	C	1½	5¼	7	4	150.0	A	140A48	1½	134.0
54	140C54	31.100	C	1½	5¼	7	4	177.0	A	140A54	1½	173.0
60	140C60	34.440	C	1½	5¼	7	5	220.0	A	140A60	1½	219.0
70	140C70	40.020	C	1½	5¼	7½	5	282.0	A	140A70	1½	292.0
80	140C80	45.590	C	1½	5¼	7½	5	331.0	A	140A80	1½	402.0

Maximum bores shown will accommodate standard keyseat and setscrew over keyseat. Slightly larger bores are possible with no keyseat, shallow keyseat, or setscrew at angle to keyseat.



Alteration Charges

See current discount sheet for alteration charges.



ENGREDAN Elementos de Transmissão Ltda
 Rua Serra de Maracujá, 30 –Parque Reid
 CEP 09920-040

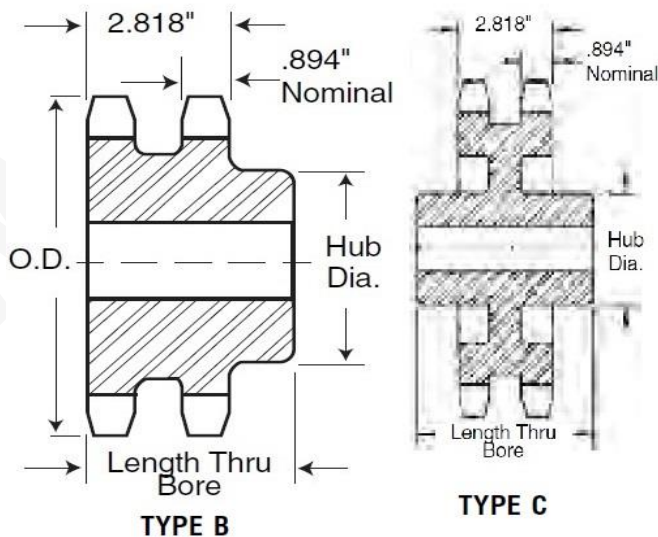
Fone: (11) 2758-6099 / Cel/Whats: (11) 99222-0666 – (11) 93800-3636
 Site: www.engredan.com.br
 E-Mail : vendas@engredan.com.br

ENGRENAGENS ASA 140-2 DUPLA PASSO 1.3/4" – 44,450 MM NORMA ASA AMERICANA

Double - Type B & C

No. Teeth	Catalog Number	Outside Diameter	Type	Bore (inches)		Hub (inches)		Weight Lbs. (Approx.)
				Stock	Rec. Max.	Dia.	Length Thru	
13	D140B13	8.150	B	1 $\frac{5}{8}$	3 $\frac{5}{16}$	5	3 $\frac{3}{4}$	29.0
14	D140B14	8.720	B	1 $\frac{5}{8}$	3 $\frac{3}{4}$	5 $\frac{1}{2}$	3 $\frac{3}{4}$	34.8
15	D140B15	9.280	B	1 $\frac{5}{8}$	4 $\frac{1}{2}$	6 $\frac{1}{2}$	3 $\frac{3}{4}$	42.5
16	D140B16	9.850	B	1 $\frac{5}{8}$	5 $\frac{1}{4}$	7	4	48.1
17	D140B17	10.410	B	1 $\frac{5}{8}$	5 $\frac{1}{4}$	7	4	57.5
18	D140B18	10.980	B	1 $\frac{3}{4}$	5 $\frac{1}{4}$	7	4	65.6
19	D140B19	11.540	B	1 $\frac{3}{4}$	5 $\frac{1}{4}$	7	4	72.0
20	D140B20	12.100	B	1 $\frac{3}{4}$	5 $\frac{1}{4}$	7	4	76.0
21	D140B21	12.660	B	1 $\frac{3}{4}$	5 $\frac{1}{4}$	7	4	82.0
22	D140B22	13.220	B	1 $\frac{3}{4}$	5 $\frac{1}{4}$	7	4	94.0
23	D140B23	13.780	B	1 $\frac{3}{4}$	5 $\frac{1}{4}$	7	4	100.0
24	D140B24	14.340	B	1 $\frac{3}{4}$	5 $\frac{1}{4}$	7	4	104.0
25	D140B25	14.900	B	1 $\frac{3}{4}$	5 $\frac{1}{4}$	7	4	120.0
26	D140B26	15.460	B	1 $\frac{3}{4}$	5 $\frac{1}{4}$	7	4	128.0
35	D140C35	20.490	C	1 $\frac{1}{2}$	5 $\frac{3}{8}$	7 $\frac{1}{2}$	6	180.0
45	D140C45	26.080	C	1 $\frac{1}{2}$	5 $\frac{3}{8}$	7 $\frac{1}{2}$	6	232.0
60	D140C60	34.440	C	1 $\frac{1}{2}$	6 $\frac{3}{8}$	9 $\frac{1}{2}$	6 $\frac{1}{4}$	372.0

Maximum bores shown will accommodate standard keyseat and setscrew over keyseat. Slightly larger bores are possible with no keyseat, shallow keyseat, or setscrew at angle to keyseat.



Alteration Charges

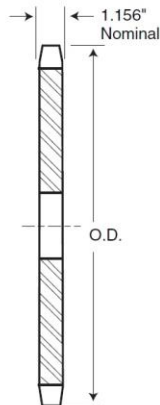
See current discount sheet for alteration charges.



ENGREDAN Elementos de Transmissão Ltda
 Rua Serra de Maracujá, 30 –Parque Reid
 CEP 09920-040

Fone: (11) 2758-6099 / Cel/Whats: (11) 99222-0666 – (11) 93800-3636
 Site: www.engredan.com.br
 E-Mail : vendas@engredan.com.br

ENGRENAGENS ASA 160-1 SIMPLES PASSO 2" – 50,800 MM NORMA ASA AMERICANA

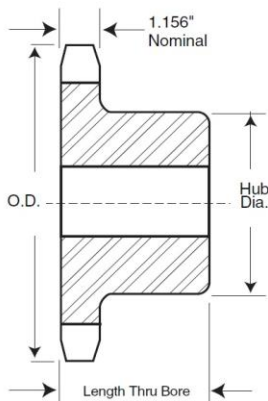


TYPE A

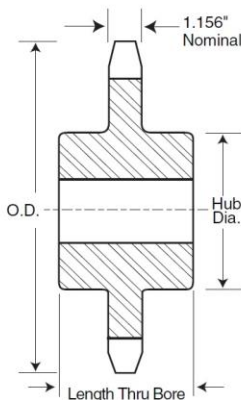


Alteration Charges

See current discount sheet for alteration charges.



TYPE B



TYPE C

Single - Type B & C

No. Teeth	Catalog Number	Outside Diameter	Type	Bore (inches)		Hub (inches)		Weight Lbs (Approx.)	Type	Catalog Number	Stock Bore	Weight Lbs. (Approx.)
				Stock	Rec. Max.	Dia.	Length Thru					
8	160B8	6.030	B	1½	1%	3¼	2¼	8.0	A	160A8	1½	5.0
9	160B9	6.700	B	1½	2%	3%	2¼	10.0	A	160A9	1½	7.0
10	160B10	7.360	B	1½	2%	4%	2¼	12.0	A	160A10	1½	8.0
11	160B11	8.010	B	1½	3%	4%	2¼	17.0	A	160A11	1½	10.0
12	160B12	8.660	B	1½	3%	5½	2½	21.0	A	160A12	1½	12.0
13	160B13	9.310	B	1½	4	6	2½	28.0	A	160A13	1½	16.0
14	160B14	9.960	B	1½	4½	6½	2½	32.0	A	160A14	1½	17.0
15	160B15	10.610	B	1½	5%	7	2½	37.0	A	160A15	1½	21.0
16	160B16	11.260	B	1½	5%	7	2½	41.0	A	160A16	1½	24.0
17	160B17	11.900	B	1½	5%	7	2½	45.0	A	160A17	1½	27.0
18	160B18	12.540	B	1½	5%	7	2½	48.0	A	160A18	1½	30.0
19	160B19	13.190	B	1½	5%	7	2½	52.0	A	160A19	1½	34.0
20	160B20	13.830	B	1½	5%	7	2½	56.0	A	160A20	1½	38.0
21	160B21	14.470	B	1½	5%	7	2½	59.0	A	160A21	1½	42.0
22	160B22	15.110	B	1½	5%	7	2½	65.0	A	160A22	1½	46.0
23	160B23	15.750	B	1½	5%	7	2½	68.0	A	160A23	1½	50.0
24	160B24	16.390	B	1½	5%	7	3	77.0	A	160A24	1½	56.0
25	160B25	17.030	B	1½	5%	7	3	81.0	A	160A25	1½	61.0
26	160B26	17.670	B	1½	5%	7	3	86.0	A	160A26	1½	65.0
27	160B27	18.310	B	1½	5%	7	3	91.0	A	160A27	1½	71.0
28	160B28	18.950	B	1½	5%	7	3	98.0	A	160A28	1½	77.0
30	160B30	20.230	B	1½	5%	7	3	108.0	A	160A30	1½	90.0
35	160C35	23.420	C	1½	5%	8	4½	154.0	A	160A35	1½	121.0
40	160C40	26.610	C	1½	5%	8	4½	196.0	A	160A40	1½	138.0
45	160C45	29.800	C	1½	5%	8	5	234.0	A	160A45	1½	204.0
54	160C54	35.540	C	1½	5%	8	5	276.0	A	160A54	1½	294.0
60	160C60	39.360	C	1½	5%	8	5	329.0	A	160A60	1½	366.0
70	160C70	45.730	C	1½	5%	8	5	446.0	A	160A70	1½	507.0
80	160C80	52.100	C	1½	5%	8	6	612.0	A	160A80	1½	656.0

Single - Type A — Plate

Single - Type C — Steel 2" Pitch

No. Teeth	Catalog Number	Outside Diameter	Bore (inches)		Hub (inches)		Weight Lbs. (Approx.)
			Stock	Rec. Max.	Diameter	Length	
11	160C11	8.010	1½"	3¼"	4½"	4½"	21.0
12	160C12	8.660	1½"	3%	5½"	4½"	26.0

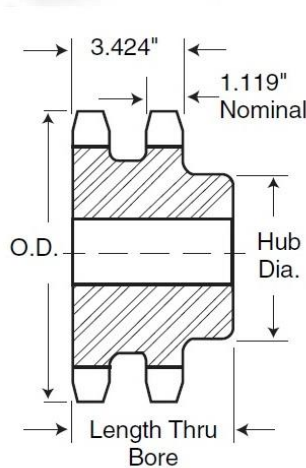
Maximum bores shown will accommodate standard keyseat and setscrew over keyseat. Slightly larger bores are possible with no keyseat, shallow keyseat, or setscrew at angle to keyseat.



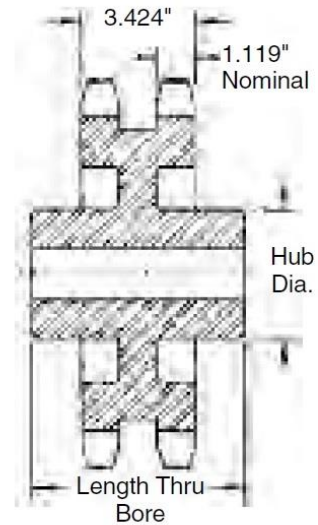
ENGREDAN Elementos de Transmissão Ltda
 Rua Serra de Maracujá, 30 –Parque Reid
 CEP 09920-040

Fone: (11) 2758-6099 / Cel/Whats: (11) 99222-0666 – (11) 93800-3636
 Site: www.engredan.com.br
 E-Mail : vendas@engredan.com.br

ENGRENAGENS ASA 160-2 SIMPLES PASSO 2" – 50,800 MM NORMA ASA AMERICANA



TYPE B



TYPE C

Alteration Charges

See current discount sheet for alteration charges.

Double - Type B & C

No. Teeth	Catalog Number	Outside Diameter	Type	Bore (inches)		Hub (inches)		Weight Lbs. (App.)
				Stock	Rec. Max.	Dia.	Length Thru	
13	D160B13	9.310	B	2	4	6	4 $\frac{3}{4}$	48
14	D160B14	9.960	B	2	4 $\frac{3}{4}$	6 $\frac{3}{4}$	4 $\frac{3}{4}$	58
15	D160B15	10.610	B	2	5 $\frac{1}{4}$	7	4 $\frac{3}{4}$	68
16	D160B16	11.260	B	2	5 $\frac{1}{4}$	7	4 $\frac{3}{4}$	75
17	D160B17	11.900	B	2	5 $\frac{1}{4}$	7	4 $\frac{3}{4}$	91
18	D160B18	12.540	B	2	5 $\frac{1}{4}$	7	4 $\frac{3}{4}$	96
19	D160B19	13.190	B	2	5 $\frac{1}{4}$	7	4 $\frac{3}{4}$	107
20	D160B20	13.830	B	2	5 $\frac{1}{4}$	7	4 $\frac{3}{4}$	119
21	D160B21	14.470	B	2	5 $\frac{3}{8}$	7 $\frac{1}{2}$	4 $\frac{3}{4}$	130
22	D160B22	15.110	B	2	5 $\frac{3}{8}$	7 $\frac{1}{2}$	4 $\frac{3}{4}$	141
23	D160B23	15.750	B	2	5 $\frac{3}{8}$	7 $\frac{1}{2}$	4 $\frac{3}{4}$	157
24	D160B24	16.390	B	2	5 $\frac{3}{8}$	7 $\frac{1}{2}$	4 $\frac{3}{4}$	171
25	D160B25	17.030	B	2	5 $\frac{3}{8}$	7 $\frac{1}{2}$	4 $\frac{3}{4}$	187
26	D160B26	17.670	B	2	5 $\frac{3}{8}$	7 $\frac{1}{2}$	4 $\frac{3}{4}$	201
35	D160C35	23.420	C	1 $\frac{1}{2}$	6 $\frac{3}{4}$	9 $\frac{1}{2}$	6 $\frac{5}{8}$	306
45	D160C45	29.800	C	1 $\frac{1}{2}$	7	10	7 $\frac{1}{8}$	431
60	D160C60	39.360	C	1 $\frac{1}{2}$	7	10	7 $\frac{1}{8}$	564

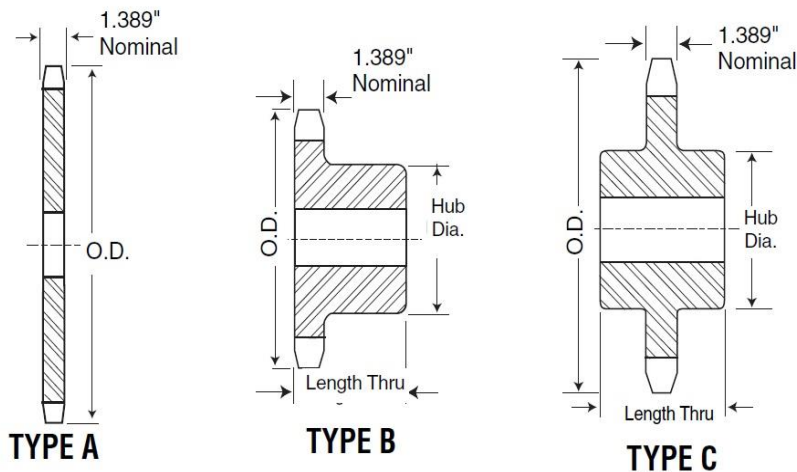
Maximum bores shown will accommodate standard keyseat and setscrew over keyseat. Slightly larger bores are possible with no keyseat, shallow keyseat, or setscrew at angle to keyseat.



ENGREDAN Elementos de Transmissão Ltda
 Rua Serra de Maracujá, 30 –Parque Reid
 CEP 09920-040

Fone: (11) 2758-6099 / Cel/Whats: (11) 99222-0666 – (11) 93800-3636
 Site: www.engredan.com.br
 E-Mail : vendas@engredan.com.br

ENGRENAGENS ASA 200 SIMPLES PASSO 2.1/2" – 63,500 MM NORMA ASA AMERICANA



Alteration Charges
 See current discount sheet
 for alteration charges.

Single - Type B & C

Single - Type A

No. Teeth	Catalog Number	Outside Diameter	Type	Bore (inches)		Hub (inches)		Weight Lbs. (Approx.)	Type	Catalog Number	Stock Bore	Weight Lbs. (Approx.)
				Stock	Rec. Max.	Diameter	Length Thru					
10	200B10	9.200	B	1½	3¾	5½	3	26	A	200A10	1½	16
11	200B11	10.020	B	1½	4	6	3	33	A	200A11	1½	20
12	200B12	10.830	B	1½	4½	6½	3	37	A	200A12	1½	24
13	200B13	11.640	B	1½	5¼	7	3	46	A	200A13	1½	30
14	200B14	12.460	B	1½	5½	7½	3½	59	A	200A14	1½	32
15	200B15	13.260	B	1½	5½	7½	3½	64	A	200A15	1½	40
16	200B16	14.070	B	1½	5½	7½	3½	72	A	200A16	1½	46
17	200B17	14.870	B	1½	5½	7½	3½	76	A	200A17	1½	51
18	200B18	15.680	B	1½	5½	7½	3½	84	A	200A18	1½	57
19	200B19	16.480	B	1½	5½	7½	3½	91	A	200A19	1½	65
20	200B20	17.290	B	1½	5½	7½	3½	98	A	200A20	1½	72
21	200B21	18.090	B	1½	5½	7½	3½	106	A	200A21	1½	82
22	200B22	18.890	B	1½	5½	8½	4	131	A	200A22	1½	88
23	200B23	19.690	B	1½	5½	8½	4	136	A	200A23	1½	95
24	200B24	20.490	B	1½	5½	8½	4	142	A	200A24	1½	105
25	200B25	21.290	B	1½	5½	8½	4	153	A	200A25	1½	113
26	200C26	22.090	C	1½	5½	8½	4½	178	A	200A26	1½	124
28	200C28	23.690	C	1½	5½	8½	4½	195	A	200A28	1½	144
30	200C30	25.290	C	1½	5½	8½	4½	212	A	200A30	1½	167
32	200C32	26.880	C	1½	5½	8½	4½	220	A	200A32	1½	195
35	200C35	29.280	C	1½	5½	8½	4½	254	A	200A35	1½	227
40	200C40	33.270	C	1½	6	9	5	320	A	200A40	1½	301
45	200C45	37.250	C	1½	6	9	5	364	A	200A45	1½	390
54	200C54	44.420	C	1½	6½	9½	5½	512	A	200A54	1½	555
60	200C60	49.200	C	1½	6½	9½	5½	654	A	200A60	1½	692

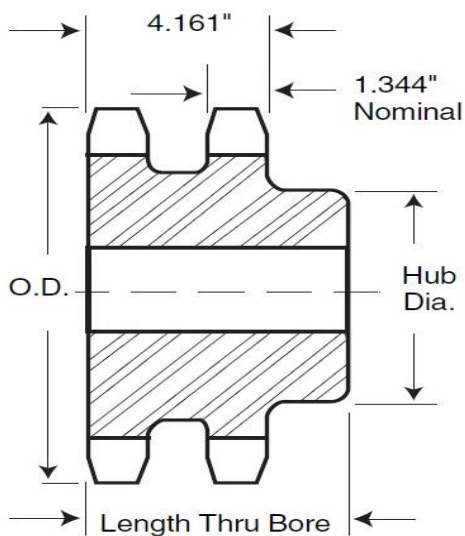
Maximum bores shown will accommodate standard keyseat and setscrew over keyseat. Slightly larger bores are possible with no keyseat, shallow keyseat, or setscrew at angle to keyseat.



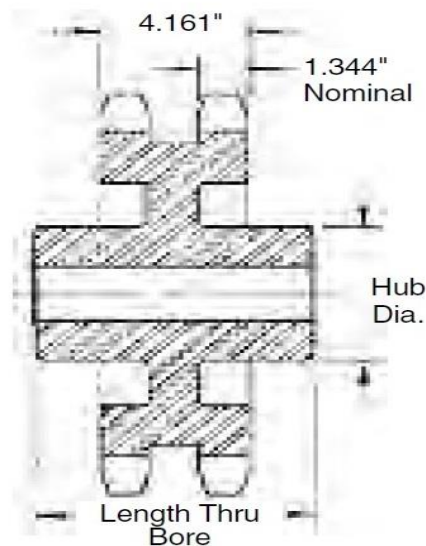
ENGREDAN Elementos de Transmissão Ltda
 Rua Serra de Maracujá, 30 –Parque Reid
 CEP 09920-040

Fone: (11) 2758-6099 / Cel/Whats: (11) 99222-0666 – (11) 93800-3636
 Site: www.engredan.com.br
 E-Mail : vendas@engredan.com.br

ENGRENAGENS ASA 200 DUPLA PASSO 2.1/2" – 63,500 MM NORMA ASA AMERICANA



TYPE B



TYPE C

Alteration Charges

See current discount sheet for alteration charges.

Double - Type B & C

No. Teeth	Catalog Number	Outside Diameter	Type	Bore (inches)		Hub (inches)		Weight Lbs. (Approx.)
				Stock	Rec. Max.	Dia.	Length Thru	
11	D200B11	10.020	B	2	3 $\frac{3}{4}$	5 $\frac{1}{2}$	5 $\frac{7}{8}$	57
12	D200B12	10.830	B	2	4 $\frac{1}{2}$	6 $\frac{1}{2}$	6 $\frac{1}{4}$	80
13	D200B13	11.640	B	2	5 $\frac{1}{4}$	7	6 $\frac{3}{8}$	96
14	D200B14	12.460	B	2	5 $\frac{1}{2}$	8	6 $\frac{3}{8}$	119
15	D200B15	13.260	B	2	5 $\frac{3}{4}$	8 $\frac{1}{2}$	6 $\frac{3}{8}$	138
16	D200B16	14.070	B	2	5 $\frac{3}{4}$	8 $\frac{1}{2}$	6 $\frac{5}{8}$	161
17	D200B17	14.870	B	2	5 $\frac{3}{4}$	8 $\frac{1}{2}$	6 $\frac{5}{8}$	178
18	D200B18	15.680	B	2	5 $\frac{3}{4}$	8 $\frac{1}{2}$	6 $\frac{5}{8}$	196
19	D200B19	16.480	B	2	5 $\frac{3}{4}$	8 $\frac{1}{2}$	6 $\frac{5}{8}$	217
20	D200B20	17.290	B	2	5 $\frac{3}{4}$	8 $\frac{1}{2}$	6 $\frac{5}{8}$	236
21	D200B21	18.090	B	2	5 $\frac{3}{4}$	8 $\frac{1}{2}$	6 $\frac{5}{8}$	250
22	D200B22	18.890	B	2	5 $\frac{3}{4}$	8 $\frac{1}{2}$	6 $\frac{5}{8}$	284
23	D200B23	19.690	B	2	5 $\frac{3}{4}$	8 $\frac{1}{2}$	6 $\frac{5}{8}$	308
24	D200B24	20.490	B	2	5 $\frac{3}{4}$	8 $\frac{1}{2}$	6 $\frac{5}{8}$	330
25	D200B25	21.290	B	2	5 $\frac{3}{4}$	8 $\frac{1}{2}$	6 $\frac{5}{8}$	358
26	D200B26	22.090	B	2	5 $\frac{3}{4}$	8 $\frac{1}{2}$	6 $\frac{5}{8}$	386
45	D200C45	37.250	C	1 $\frac{1}{2}$	7	10	8 $\frac{1}{2}$	665
60	D200C60	49.200	C	1 $\frac{1}{2}$	7	10	9	972

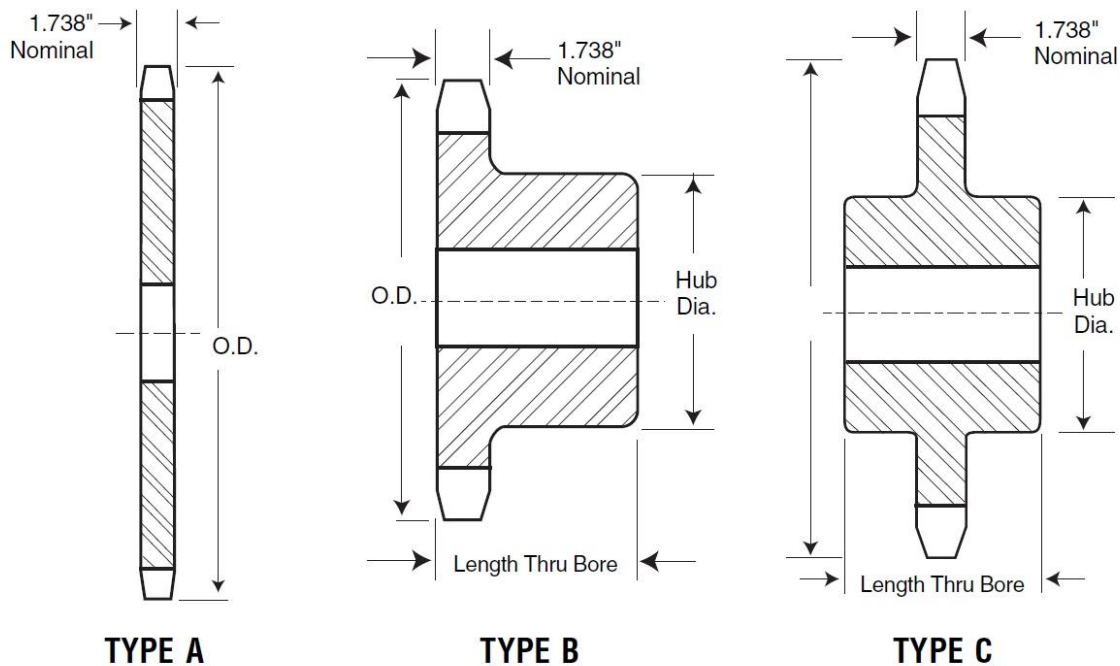
Maximum bores shown will accommodate standard keyseat and setscrew over keyseat. Slightly larger bores are possible with no keyseat, shallow keyseat, or setscrew at angle to keyseat.



ENGREDAN Elementos de Transmissão Ltda
 Rua Serra de Maracujá, 30 –Parque Reid
 CEP 09920-040

Fone: (11) 2758-6099 / Cel/Whats: (11) 99222-0666 – (11) 93800-3636
 Site: www.engredan.com.br
 E-Mail : vendas@engredan.com.br

ENGRENAGENS ASA 240 SIMPLES PASSO 3" – 67,200 MM NORMA ASA AMERICANA



Single - Type B & C

Single - Type A

No. Teeth	Catalog Number	Outside Diameter	Type	Bore (inches)		Hub (inches)		Weight Lbs (Approx.)	Type	Catalog Number	Stock Bore	Weight Lbs. (Approx.)
				Stock	Rec. Max.	Dia.	Length Thru					
10	240B10	11.030	B	1½	4½	6½	3%	49.0	A	240A10	1½	30.0
11	240B11	12.020	B	1½	4¾	7	3%	66.0	A	240A11	1½	37.0
12	240B12	13.000	B	1½	5%	7½	3%	72.0	A	240A12	1½	45.0
13	240B13	13.970	B	1½	5%	7½	3%	81.0	A	240A13	1½	54.0
14	240B14	14.940	B	1½	5%	7½	3%	88.0	A	240A14	1½	62.0
15	240B15	15.910	B	1½	5%	7½	3%	98.0	A	240A15	1½	68.0
16	240B16	16.880	B	1½	5½	8	4%	120.0	A	240A16	1½	82.0
17	240B17	17.850	B	1½	5½	8	4%	137.0	A	240A17	1½	93.0
18	240B18	18.810	B	1½	5½	8	4%	142.0	A	240A18	1½	108.0
19	240B19	19.780	B	1½	5½	8	4%	154.0	A	240A19	1½	120.0
20	240B20	20.740	B	1½	5½	8	4%	169.0	A	240A20	1½	128.0
21	240B21	21.710	B	1½	5½	8	4%	186.0	A	240A21	1½	148.0
25	240B25	25.550	B	1½	5½	8	4%	254.0	A	240A25	1½	208.0
30	240C30	30.340	C	1½	6	9	6%	398.0	A	240A30	1½	310.0
35	240C35	35.130	C	1½	6	9	6%	527.0	A	240A35	1½	416.0
40	240C40	39.920	C	1½	7	10	6%	672.0	A	240A40	1½	548.0
45	240C45	44.700	C	1½	7	10	6%	850.0	A	240A45	1½	702.0
54	240C54	53.310	C	1½	7	10	6%	1148.0	A	240A54	1½	1022.0
60	240C60	59.040	C	1½	7	10	6%	1419.0	A	240A60	1½	1268.0